

For Research Use Only

OGDH Monoclonal antibody

Catalog Number: 66285-1-Ig **3 Publications**



Basic Information

Catalog Number: 66285-1-Ig	GenBank Accession Number: BC004964	Purification Method: Protein A purification
Size: 1300 µg/ml	GeneID (NCBI): 4967	CloneNo.: 1H7A2
Source: Mouse	UNIPROT ID: Q02218	Recommended Dilutions: WB 1:1000-1:5000 IHC 1:50-1:500 IF/ICC 1:200-1:800
Isotype: IgG2b	Full Name: oxoglutarate (alpha-ketoglutarate) dehydrogenase (lipoamide)	
Immunogen Catalog Number: AG7484	Calculated MW: 116 kDa	
	Observed MW: 116 kDa	

Applications

Tested Applications: WB, IHC, IF/ICC, ELISA	Positive Controls: WB : human heart tissue, ROS1728 cells IHC : human lung cancer tissue, IF/ICC : HepG2 cells,
Cited Applications: WB, IHC	
Species Specificity: human, rat	
Cited Species: human, mouse	
Note-IHC: suggested antigen retrieval with TE buffer pH 9.0; (*) Alternatively, antigen retrieval may be performed with citrate buffer pH 6.0	

Background Information

OGDH(2-oxoglutarate dehydrogenase, mitochondrial) is also named as OGDC-E1 and belongs to the alpha-ketoglutarate dehydrogenase family. It is one of the three enzymatic components of 2-oxoglutarate dehydrogenase complex, which catalyzes the overall conversion of 2-oxoglutarate to succinyl-CoA and CO₂. This protein has 3 isoforms produced by alternative splicing.

Notable Publications

Author	Pubmed ID	Journal	Application
Simone Kumstel	35452495	PLoS One	IHC
Yu Shi	39223390	Nat Cardiovasc Res	WB
João Leandro	32160276	Hum Mol Genet	WB

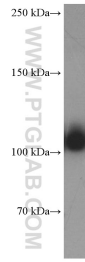
Storage

Storage:
Store at -20°C. Stable for one year after shipment.
Storage Buffer:
PBS with 0.02% sodium azide and 50% glycerol pH 7.3.
Aliquoting is unnecessary for -20°C storage

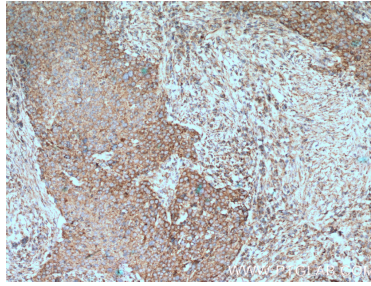
For technical support and original validation data for this product please contact:
T: 4006900926 E: Proteintech-CN@ptglab.com W: ptgcn.com

This product is exclusively available under Proteintech Group brand and is not available to purchase from any other manufacturer.

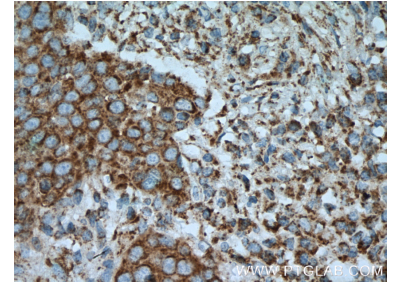
Selected Validation Data



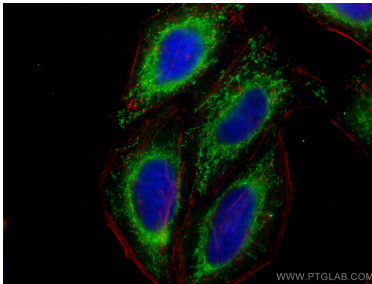
human heart tissue were subjected to SDS PAGE followed by western blot with 66285-1-Ig (OGDH Antibody) at dilution of 1:2500 incubated at room temperature for 1.5 hours.



Immunohistochemical analysis of paraffin-embedded human lung cancer tissue slide using 66285-1-Ig (OGDH Antibody) at dilution of 1:200 (under 10x lens). Heat mediated antigen retrieval with Tris-EDTA buffer (pH 9.0).



Immunohistochemical analysis of paraffin-embedded human lung cancer tissue slide using 66285-1-Ig (OGDH Antibody) at dilution of 1:200 (under 40x lens). Heat mediated antigen retrieval with Tris-EDTA buffer (pH 9.0).



Immunofluorescent analysis of (-20°C Ethanol) fixed HepG2 cells using OGDH antibody (66285-1-Ig, Clone: 1H7A2) at dilution of 1:400 and CoraLite®488-Conjugated Goat Anti-Mouse IgG(H+L) (SA00013-1), CL594-phalloidin (red).