

For Research Use Only

SDCCAG8 Monoclonal antibody, PBS Only



Catalog Number: 66284-1-PBS

Basic Information

Catalog Number: 66284-1-PBS	GenBank Accession Number: BC032454	Purification Method: Protein A purification
Size: 1 mg/ml	GeneID (NCBI): 10806	CloneNo.: 2H1A4
Source: Mouse	UNIPROT ID: Q86SQ7	
Isotype: IgG2b	Full Name: serologically defined colon cancer antigen 8	
Immunogen Catalog Number: AG4264	Calculated MW: 713 aa, 83 kDa	
	Observed MW: 83 kDa	

Applications

Tested Applications:
WB, Indirect ELISA, IHC

Species Specificity:
human

Background Information

SDCCAG8, also named as CCCAP and NY-CO-8, plays a role in the establishment of cell polarity and epithelial lumen formation. It may play a role in ciliogenesis. Loss of SDCCAG8 function as a cause of a retinal-renal ciliopathy and validates exome capture analysis for broadly heterogeneous single-gene disorders. SDCCAG8 is localized at both centrioles and interacts directly with OFD1 (oral-facial-digital syndrome 1), which is associated with NPHP-RC.

Storage

Storage:
Store at -80°C.
The product is shipped with ice packs. Upon receipt, store it immediately at -80°C

Storage Buffer:
PBS Only

For technical support and original validation data for this product please contact:

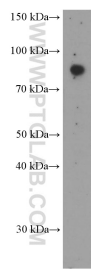
T: 4006900926

E: Proteintech-CN@ptglab.com

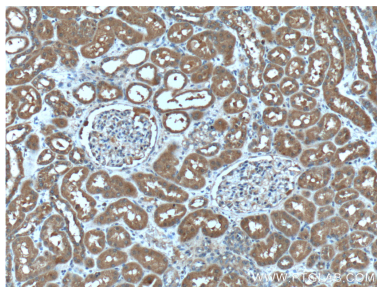
W: ptgcn.com

This product is exclusively available under Proteintech Group brand and is not available to purchase from any other manufacturer.

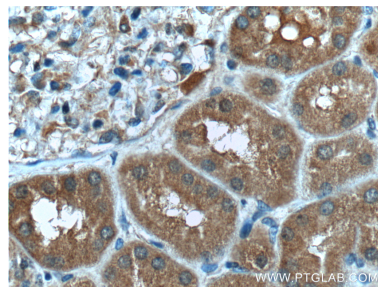
Selected Validation Data



HEK-293 cells were subjected to SDS PAGE followed by western blot with 66284-1-Ig (SDCCAG8 Antibody) at dilution of 1:1000 incubated at room temperature for 1.5 hours. This data was developed using the same antibody clone with 66284-1-PBS in a different storage buffer formulation.



Immunohistochemical analysis of paraffin-embedded human kidney tissue slide using 66284-1-Ig (SDCCAG8 Antibody) at dilution of 1:200 (under 10x lens). This data was developed using the same antibody clone with 66284-1-PBS in a different storage buffer formulation.



Immunohistochemical analysis of paraffin-embedded human kidney tissue slide using 66284-1-Ig (SDCCAG8 Antibody) at dilution of 1:200 (under 40x lens). This data was developed using the same antibody clone with 66284-1-PBS in a different storage buffer formulation.