

For Research Use Only

IGF1R/CD221 Monoclonal antibody, PBS Only

Catalog Number: 66283-1-PBS



Basic Information

Catalog Number: 66283-1-PBS	GenBank Accession Number: NM_000875	Purification Method: Protein G purification
Concentration: 1 mg/ml	GeneID (NCBI): 3480	CloneNo.: 3C6A11
Source: Mouse	UNIPROT ID: P08069	
Isotype: IgG1	Full Name: IGF I receptor	
	Calculated MW: 155 kDa	
	Observed MW: 130-140 kDa	

Applications

Tested Applications:
WB, IHC, Indirect ELISA

Species Specificity:
human, rat

Background Information

IGF1R, also named as CD221, is a receptor tyrosine kinase which mediates actions of INS-like growth factor 1 (IGF1). IGF1R binds IGF1 with high affinity and IGF2 and INS with a lower affinity, the activated IGF1R is involved in cell growth and survival control. It is crucial for tumor transformation and survival of malignant cells. IGF1R is translated as ~220 kDa pro-receptors (PMID: 33969359). IGF1R is a heterotetrameric receptor, composed of two alpha subunits (~130 kDa) and two beta subunits (~100-120 kDa) (PMID: 6279656). Both the alpha and beta subunits are synthesized from a single mRNA precursor. The precursor is then glycosylated, proteolytically cleaved, and crosslinked by cysteine bonds.

Storage

Storage:
Store at -80°C.
The product is shipped with ice packs. Upon receipt, store it immediately at -80°C

Storage Buffer:
PBS only, pH7.3

For technical support and original validation data for this product please contact:

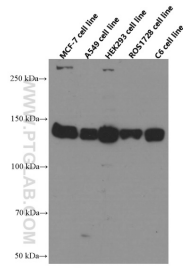
T: 4006900926

E: Proteintech-CN@ptglab.com

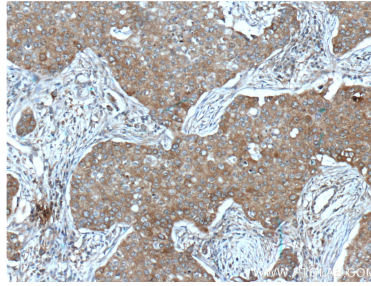
W: ptgcn.com

This product is exclusively available under Proteintech Group brand and is not available to purchase from any other manufacturer.

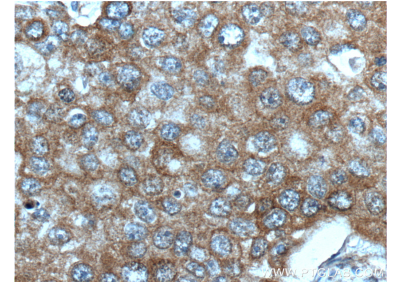
Selected Validation Data



Various lysates were subjected to SDS PAGE followed by western blot with 66283-1-Ig (IGF1R beta chain antibody at dilution of 1:4000 incubated at room temperature for 1.5 hours. This data was developed using the same antibody clone with 66283-1-PBS in a different storage buffer formulation.



Immunohistochemical analysis of paraffin-embedded human breast cancer tissue slide using 66283-1-Ig (IGF1R beta chain antibody at dilution of 1:200 (under 10x lens). Heat mediated antigen retrieval with Tris-EDTA buffer (pH 9.0). This data was developed using the same antibody clone with 66283-1-PBS in a different storage buffer formulation.



Immunohistochemical analysis of paraffin-embedded human breast cancer tissue slide using 66283-1-Ig (IGF1R beta chain antibody at dilution of 1:200 (under 40x lens). Heat mediated antigen retrieval with Tris-EDTA buffer (pH 9.0). This data was developed using the same antibody clone with 66283-1-PBS in a different storage buffer formulation.