

For Research Use Only

CDK6 Monoclonal antibody, PBS Only

Catalog Number: 66278-1-PBS

Featured Product



Basic Information

Catalog Number:

66278-1-PBS

Size:

1mg/ml

Source:

Mouse

Isotype:

IgG1

Immunogen Catalog Number:

AG5600

GenBank Accession Number:

BC027989

GeneID (NCBI):

1021

UNIPROT ID:

Q00534

Full Name:

cyclin-dependent kinase 6

Calculated MW:

326 aa, 36 kDa

Observed MW:

36-40 kDa

Purification Method:

Protein A purification

CloneNo.:

4B9C11

Applications

Tested Applications:

WB, IHC, IF/ICC, ELISA

Species Specificity:

human, mouse, rat

Background Information

CDK6(Cyclin-dependent kinase 6) is involved in initiation and maintenance of cell cycle exit during cell differentiation and it prevents cell proliferation and regulates negatively cell differentiation, but is required for the proliferation of specific cell types. The molecular weight of CDK6 is 36-40 KDa (PMID: 23563707, 8114739).

Storage

Storage:

Store at -80°C.

The product is shipped with ice packs. Upon receipt, store it immediately at -80°C

Storage Buffer:

PBS Only

For technical support and original validation data for this product please contact:

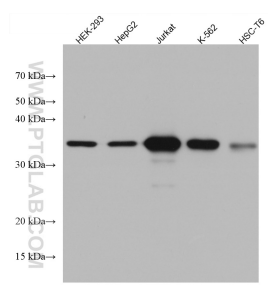
T: 4006900926

E: Proteintech-CN@ptglab.com

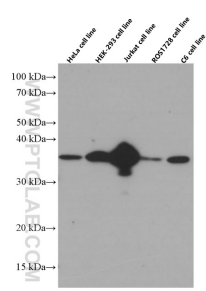
W: ptgcn.com

This product is exclusively available under Proteintech Group brand and is not available to purchase from any other manufacturer.

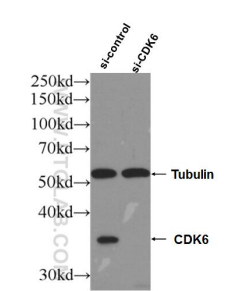
Selected Validation Data



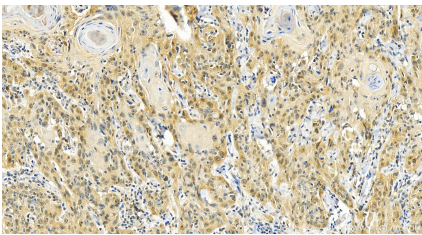
Various lysates were subjected to SDS PAGE followed by western blot with 66278-1-Ig (CDK6 antibody) at dilution of 1:10000 incubated at room temperature for 1.5 hours. This data was developed using the same antibody clone with 66278-1-PBS in a different storage buffer formulation.



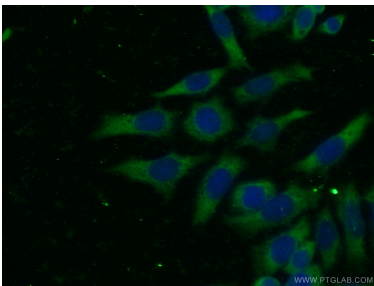
Various lysates were subjected to SDS PAGE followed by western blot with 66278-1-Ig (CDK6 antibody) at dilution of 1:50000 incubated at room temperature for 1.5 hours. This data was developed using the same antibody clone with 66278-1-PBS in a different storage buffer formulation.



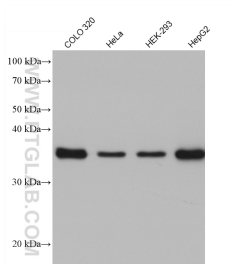
WB result of CDK6 antibody (66278-1-Ig; 1:10000; incubated at room temperature for 1.5 hours) with sh-Control and sh-CDK6 transfected HEK-293 cells. This data was developed using the same antibody clone with 66278-1-PBS in a different storage buffer formulation.



Immunohistochemical analysis of paraffin-embedded human skin cancer tissue slide using 66278-1-Ig (CDK6 antibody) at dilution of 1:200 (under 20x lens). Heat mediated antigen retrieval with Tris-EDTA buffer (pH 9.0). This data was developed using the same antibody clone with 66278-1-PBS in a different storage buffer formulation.



Immunofluorescent analysis of (-20°C Ethanol) fixed HeLa cells using 66278-1-Ig(CDK6 antibody) at dilution of 1:100 and Alexa Fluor 488-conjugated AffiniPure Goat Anti-Mouse IgG(H+L). This data was developed using the same antibody clone with 66278-1-PBS in a different storage buffer formulation.



Various lysates were subjected to SDS PAGE followed by western blot with 66278-1-Ig (CDK6 antibody) at dilution of 1:10000 incubated at room temperature for 1.5 hours. This data was developed using the same antibody clone with 66278-1-PBS in a different storage buffer formulation.