

For Research Use Only

CAPG Monoclonal antibody

Catalog Number: 66277-1-Ig **Featured Product**



Basic Information

Catalog Number: 66277-1-Ig	GenBank Accession Number: BC000728	Purification Method: Protein G purification
Size: 1600 µg/ml	GeneID (NCBI): 822	CloneNo.: 3A5B2
Source: Mouse	UNIPROT ID: P40121	Recommended Dilutions: WB 1:500-1:2000 IHC 1:50-1:500 IF 1:50-1:500
Isotype: IgG1	Full Name: capping protein (actin filament), gelsolin-like	
Immunogen Catalog Number: AG24676	Calculated MW: 39 kDa Observed MW: 39-40 kDa	

Applications

Tested Applications: IF/ICC, IHC, WB, ELISA	Positive Controls: WB: Jurkat cells, HeLa cells, HL-60 cells IHC: human lung cancer tissue, IF: HeLa cells,
Species Specificity: human	
Note-IHC: suggested antigen retrieval with TE buffer pH 9.0; (*) Alternatively, antigen retrieval may be performed with citrate buffer pH 6.0	

Background Information

CapG (gelsolin-like actin-capping protein) is a member of the gelsolin superfamily proteins, which regulates actin filament length by capping or severing filaments. Studies have shown a role for CapG in regulating cell motility. The expression of CapG is upregulated under hypoxia and in turn increases the motility of cells. Recently it has been reported that the overexpression of CapG is associated with the progression of lung adenocarcinoma as well as lymphatic invasion status of cholangiocarcinoma, which may be used for prognosis of these tumors. (21908955,22155129)

Storage

Storage:
Store at -20°C. Stable for one year after shipment.
Storage Buffer:
PBS with 0.02% sodium azide and 50% glycerol pH 7.3.
Aliquoting is unnecessary for -20°C storage

For technical support and original validation data for this product please contact:

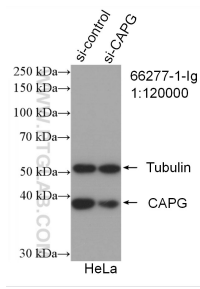
T: 4006900926

E: Proteintech-CN@ptglab.com

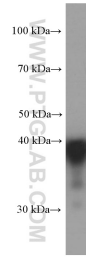
W: ptgcn.com

This product is exclusively available under Proteintech Group brand and is not available to purchase from any other manufacturer.

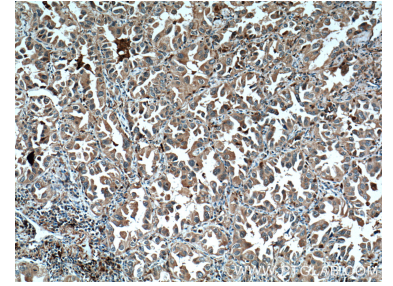
Selected Validation Data



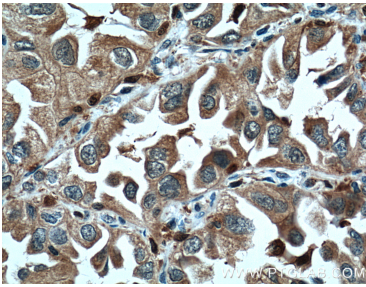
WB result of CAPG antibody (66277-1-Ig; 1:120000); incubated at room temperature for 1.5 hours) with sh-Control and sh-CAPG transfected HeLa cells.



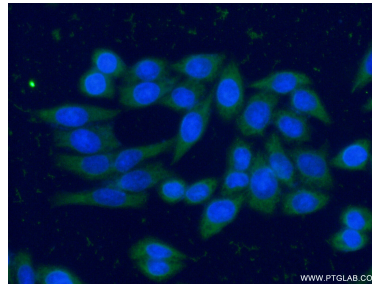
Jurkat cells were subjected to SDS PAGE followed by western blot with 66277-1-Ig (CAPG Antibody) at dilution of 1:1000 incubated at room temperature for 1.5 hours.



Immunohistochemical analysis of paraffin-embedded human lung cancer tissue slide using 66277-1-Ig (CAPG Antibody) at dilution of 1:200 (under 10x lens). Heat mediated antigen retrieval with Tris-EDTA buffer (pH 9.0).



Immunohistochemical analysis of paraffin-embedded human lung cancer tissue slide using 66277-1-Ig (CAPG Antibody) at dilution of 1:200 (under 40x lens). Heat mediated antigen retrieval with Tris-EDTA buffer (pH 9.0).



Immunofluorescent analysis of (-20°C Ethanol) fixed HeLa cells using 66277-1-Ig (CAPG antibody) at dilution of 1:100 and Alexa Fluor 488-conjugated AffiniPure Goat Anti-Mouse IgG(H+L).