

For Research Use Only

ERCC1 Monoclonal antibody, PBS Only



Catalog Number: 66275-1-PBS

Basic Information

Catalog Number:

66275-1-PBS

Size:

1 mg/ml

Source:

Mouse

Isotype:

IgG1

Immunogen Catalog Number:

AG6417

GenBank Accession Number:

BC052813

GeneID (NCBI):

2067

UNIPROT ID:

P07992

Full Name:

excision repair cross-complementing rodent repair deficiency, complementation group 1 (includes overlapping antisense sequence)

Calculated MW:

33 kDa

Observed MW:

38 kDa

Purification Method:

Protein G purification

CloneNo.:

1H4D5

Applications

Tested Applications:

WB, Indirect ELISA, IF

Species Specificity:

human

Background Information

Excision Repair Cross Complementing 1 (ERCC1) is a structure-specific endonuclease that is responsible for the 5'-incision during DNA repair. It forms a complex with ERCC11, XPF and ERCC4, which are required in both recombinatorial repair and nucleotide excision repair. It has been found that ERCC1, together with RRM1, are determinants of survival after surgical treatment of early-stage, non-small-cell lung cancer. (Ref: Simon, ER. 2005)

Storage

Storage:

Store at -80°C.

The product is shipped with ice packs. Upon receipt, store it immediately at -80°C

Storage Buffer:

PBS Only

For technical support and original validation data for this product please contact:

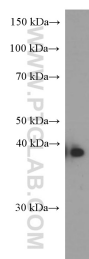
T: 4006900926

E: Proteintech-CN@ptglab.com

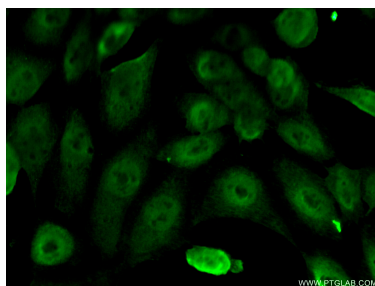
W: ptgcn.com

This product is exclusively available under Proteintech Group brand and is not available to purchase from any other manufacturer.

Selected Validation Data



A431 cells were subjected to SDS PAGE followed by western blot with 66275-1-Ig (ERCC1 Antibody) at dilution of 1:2000 incubated at room temperature for 1.5 hours. This data was developed using the same antibody clone with 66275-1-PBS in a different storage buffer formulation.



Immunofluorescent analysis of (10% Formaldehyde) fixed A431 cells using 66275-1-Ig(ERCC1 antibody) at dilution of 1:50 and Alexa Fluor 488-conjugated AffiniPure Goat Anti-Mouse IgG(H+L). This data was developed using the same antibody clone with 66275-1-PBS in a different storage buffer formulation.