

# CLTCL1 Monoclonal antibody

Catalog Number: 66274-1-Ig

## Basic Information

<b>Catalog Number:</b> 66274-1-Ig	<b>GenBank Accession Number:</b> NM_007098	<b>Purification Method:</b> Protein A purification
<b>Size:</b> 2400 µg/ml	<b>GeneID (NCBI):</b> 8218	<b>CloneNo.:</b> 1B5A10
<b>Source:</b> Mouse	<b>UNIPROT ID:</b> P53675	<b>Recommended Dilutions:</b> WB 1:500-1:2000 IHC 1:50-1:500 IF/ICC 1:50-1:500
<b>Isotype:</b> IgG2a	<b>Full Name:</b> clathrin, heavy chain-like 1	
	<b>Calculated MW:</b> 187 kDa	
	<b>Observed MW:</b> 180 kDa	

## Applications

<b>Tested Applications:</b> IF/ICC, IHC, WB, ELISA	<b>Positive Controls:</b>
<b>Species Specificity:</b> human	<b>WB :</b> HeLa cells, HEK-293 cells, Jurkat cells
<b>Note-IHC:</b> suggested antigen retrieval with <b>TE buffer pH 9.0; (*) Alternatively, antigen retrieval may be performed with citrate buffer pH 6.0</b>	<b>IHC :</b> human skeletal muscle tissue,
	<b>IF/ICC :</b> HeLa cells,

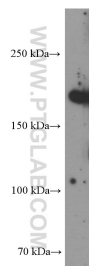
## Background Information

CLTCL1, also named as CLH22, CLTCL and CLTD, belongs to the clathrin heavy chain family. Clathrin is the major protein of the polyhedral coat of coated pits and vesicles. Two different adapter protein complexes link the clathrin lattice either to the plasma membrane or to the trans-Golgi network. The antibody is specific to CLTCL1. It has no cross reaction to CLTC.

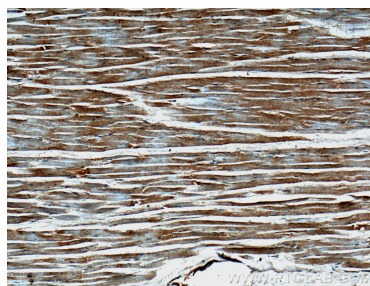
## Storage

**Storage:**  
Store at -20°C. Stable for one year after shipment.  
**Storage Buffer:**  
PBS with 0.02% sodium azide and 50% glycerol pH 7.3.  
Aliquoting is unnecessary for -20°C storage

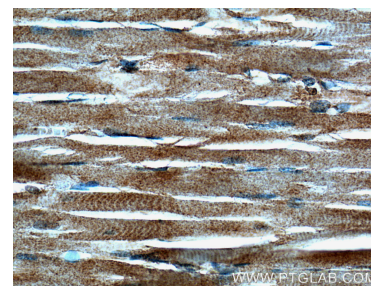
## Selected Validation Data



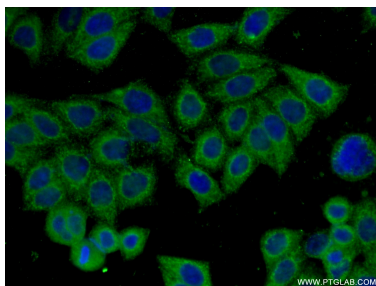
HeLa cells were subjected to SDS PAGE followed by western blot with 66274-1-Ig (CLTCL1 antibody) at dilution of 1:1000 incubated at room temperature for 1.5 hours.



Immunohistochemical analysis of paraffin-embedded human skeletal muscle tissue slide using 66274-1-Ig (CLTCL1 antibody) at dilution of 1:200 (under 10x lens).



Immunohistochemical analysis of paraffin-embedded human skeletal muscle tissue slide using 66274-1-Ig (CLTCL1 antibody) at dilution of 1:200 (under 40x lens).



Immunofluorescent analysis of (-20°C Ethanol) fixed HeLa cells using 66274-1-Ig (CLTCL1 antibody) at dilution of 1:100 and Alexa Fluor 488-Conjugated AffiniPure Goat Anti-Mouse IgG(H+L).