

For Research Use Only

# CLPP Monoclonal antibody

Catalog Number: 66271-1-Ig

Featured Product

4 Publications



## Basic Information

Catalog Number:

66271-1-Ig

Size:

1000 µg/ml

Source:

Mouse

Isotype:

IgG3

Immunogen Catalog Number:

AG8420

GenBank Accession Number:

BC002956

GeneID (NCBI):

8192

UNIPROT ID:

Q16740

Full Name:

ClpP caseinolytic peptidase, ATP-dependent, proteolytic subunit homolog (E. coli)

Calculated MW:

30 kDa

Observed MW:

26 kDa, 30 kDa

Purification Method:

Protein G purification

CloneNo.:

2E1D9

Recommended Dilutions:

WB 1:500-1:2000

IHC 1:100-1:400

## Applications

Tested Applications:

IHC, WB, ELISA

Cited Applications:

WB, IF

Species Specificity:

human, pig

Cited Species:

human, mouse

**Note-IHC: suggested antigen retrieval with TE buffer pH 9.0; (\*) Alternatively, antigen retrieval may be performed with citrate buffer pH 6.0**

Positive Controls:

WB : human heart tissue, pig heart tissue

IHC : human heart tissue,

## Background Information

CLPP is the putative ATP-dependent Clp protease proteolytic subunit and also named as endopeptidase Clp. It belongs to the peptidase S14 family. Clp cleaves peptides in various proteins in a process that requires ATP hydrolysis. It may be responsible for a fairly general and central housekeeping function rather than for the degradation of specific substrates. This protein has a transit peptide of 56 amino acid.

## Notable Publications

Author	Pubmed ID	Journal	Application
Jana Key	34943861	Cells	IF
GuiJun Wu	31304066	PeerJ	WB
Vincenzo Sorrentino	29211722	Nature	WB

## Storage

Storage:

Store at -20°C. Stable for one year after shipment.

Storage Buffer:

PBS with 0.02% sodium azide and 50% glycerol pH 7.3.

Aliquoting is unnecessary for -20°C storage

For technical support and original validation data for this product please contact:

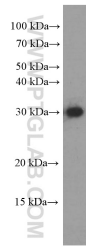
T: 4006900926

E: Proteintech-CN@ptglab.com

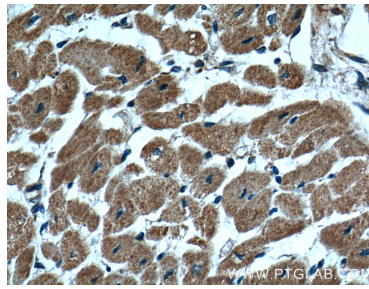
W: ptgcn.com

**This product is exclusively available under Proteintech Group brand and is not available to purchase from any other manufacturer.**

## Selected Validation Data



human heart tissue were subjected to SDS PAGE followed by western blot with 66271-1-Ig (CLPP Antibody) at dilution of 1:1000 incubated at room temperature for 1.5 hours.



Immunohistochemical analysis of paraffin-embedded human heart tissue slide using 66271-1-Ig (CLPP Antibody) at dilution of 1:200 (under 40x lens).