

For Research Use Only

CLTB Monoclonal antibody, PBS Only

Catalog Number: 66270-1-PBS



Basic Information

| | | | | | |
|---------------------------|-------------|---------------------------|-----------------------------|----------------------|------------------------|
| Catalog Number: | 66270-1-PBS | GenBank Accession Number: | BC006457 | Purification Method: | Protein G purification |
| Size: | 1 mg/ml | GeneID (NCBI): | 1212 | CloneNo.: | 1F9C2 |
| Source: | Mouse | UNIPROT ID: | P09497 | | |
| Isotype: | IgG1 | Full Name: | clathrin, light chain (Lcb) | | |
| Immunogen Catalog Number: | AG24347 | Calculated MW: | 23 kDa | | |
| | | Observed MW: | 32-38 kDa | | |

Applications

Tested Applications:
WB, Indirect ELISA, IHC, IF

Species Specificity:
human, pig

Background Information

Clathrin is the major protein of the polyhedral coat of coated pits and vesicles which entrap specific macromolecules during receptor-mediated endocytosis. The clathrin molecule has a triskelion shape. Each clathrin triskelion is composed of three identical heavy chains (180 kDa) and three light chains of two types, LCA (CLTA) and LCB (CLTB) (30-40 kDa). The light chain subunits are thought to regulate the formation or disassembly of clathrin coats. (PMID: 2445759; 8374173; 3563513)

Storage

Storage:
Store at -80°C.

The product is shipped with ice packs. Upon receipt, store it immediately at -80°C

Storage Buffer:
PBS Only

For technical support and original validation data for this product please contact:

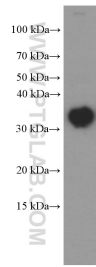
T: 4006900926

E: Proteintech-CN@ptglab.com

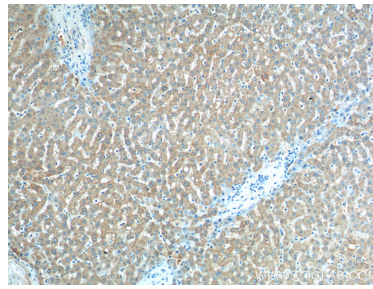
W: ptgcn.com

This product is exclusively available under Proteintech Group brand and is not available to purchase from any other manufacturer.

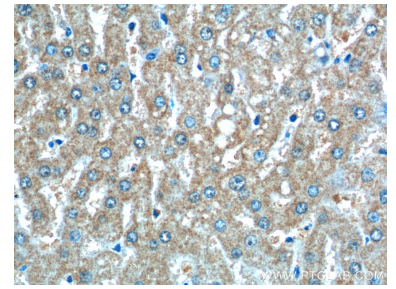
Selected Validation Data



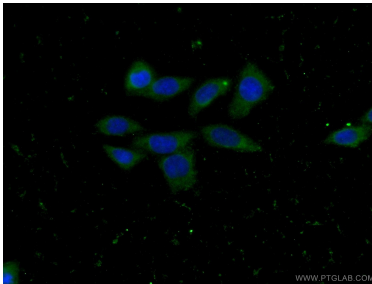
pig brain tissue were subjected to SDS PAGE followed by western blot with 66270-1-Ig (CLTB antibody) at dilution of 1:1000 incubated at room temperature for 1.5 hours. This data was developed using the same antibody clone with 66270-1-PBS in a different storage buffer formulation.



Immunohistochemical analysis of paraffin-embedded human liver tissue slide using 66270-1-Ig (CLTB Antibody) at dilution of 1:200 (under 10x lens). This data was developed using the same antibody clone with 66270-1-PBS in a different storage buffer formulation.



Immunohistochemical analysis of paraffin-embedded human liver tissue slide using 66270-1-Ig (CLTB Antibody) at dilution of 1:200 (under 40x lens). This data was developed using the same antibody clone with 66270-1-PBS in a different storage buffer formulation.



Immunofluorescent analysis of (-20°C Ethanol) fixed HeLa cells using 66270-1-Ig (CLTB antibody) at dilution of 1:100 and Alexa Fluor 488-conjugated AffiniPure Goat Anti-Mouse IgG(H+L). This data was developed using the same antibody clone with 66270-1-PBS in a different storage buffer formulation.