

For Research Use Only

# CLTB Monoclonal antibody

Catalog Number: 66270-1-Ig **1 Publications**



## Basic Information

<b>Catalog Number:</b> 66270-1-Ig	<b>GenBank Accession Number:</b> BC006457	<b>Purification Method:</b> Protein G purification
<b>Size:</b> 1700 µg/ml	<b>GeneID (NCBI):</b> 1212	<b>CloneNo.:</b> 1F9C2
<b>Source:</b> Mouse	<b>UNIPROT ID:</b> P09497	<b>Recommended Dilutions:</b> WB 1:500-1:2000 IHC 1:50-1:500 IF 1:50-1:500
<b>Isotype:</b> IgG1	<b>Full Name:</b> clathrin, light chain (Lcb)	
<b>Immunogen Catalog Number:</b> AG24347	<b>Calculated MW:</b> 23 kDa	
	<b>Observed MW:</b> 32-38 kDa	

## Applications

<b>Tested Applications:</b> IF/ICC, IHC, WB, ELISA	<b>Positive Controls:</b> WB : pig brain tissue, IHC : human liver tissue, human kidney tissue IF : HeLa cells,
<b>Cited Applications:</b> WB	
<b>Species Specificity:</b> human, pig	
<b>Cited Species:</b> human	
<b>Note-IHC: suggested antigen retrieval with TE buffer pH 9.0; (*) Alternatively, antigen retrieval may be performed with citrate buffer pH 6.0</b>	

## Background Information

Clathrin is the major protein of the polyhedral coat of coated pits and vesicles which entrap specific macromolecules during receptor-mediated endocytosis. The clathrin molecule has a triskelion shape. Each clathrin triskelion is composed of three identical heavy chains (180 kDa) and three light chains of two types, LCA (CLTA) and LCB (CLTB) (30-40 kDa). The light chain subunits are thought to regulate the formation or disassembly of clathrin coats. (PMID: 2445759; 8374173; 3563513)

## Notable Publications

Author	Pubmed ID	Journal	Application
Mengmeng Qin	31938061	Theranostics	WB

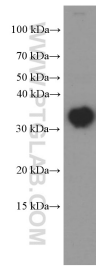
## Storage

**Storage:**  
Store at -20°C. Stable for one year after shipment.  
**Storage Buffer:**  
PBS with 0.02% sodium azide and 50% glycerol pH 7.3.  
Aliquoting is unnecessary for -20°C storage

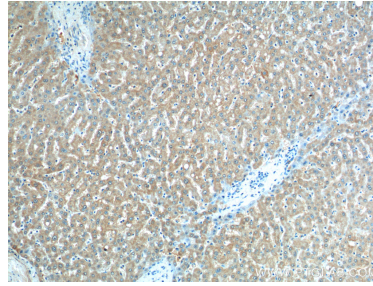
For technical support and original validation data for this product please contact:  
T: 4006900926 E: Proteintech-CN@ptglab.com W: ptgcn.com

This product is exclusively available under Proteintech Group brand and is not available to purchase from any other manufacturer.

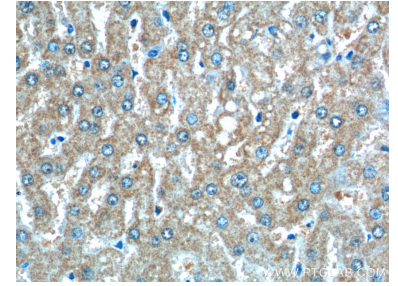
## Selected Validation Data



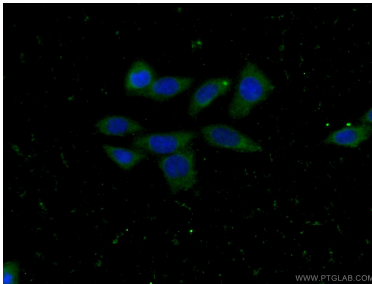
pig brain tissue were subjected to SDS PAGE followed by western blot with 66270-1-Ig (CLTB antibody) at dilution of 1:1000 incubated at room temperature for 1.5 hours.



Immunohistochemical analysis of paraffin-embedded human liver tissue slide using 66270-1-Ig (CLTB Antibody) at dilution of 1:200 (under 10x lens).



Immunohistochemical analysis of paraffin-embedded human liver tissue slide using 66270-1-Ig (CLTB Antibody) at dilution of 1:200 (under 40x lens).



Immunofluorescent analysis of (-20°C Ethanol ) fixed HeLa cells using 66270-1-Ig (CLTB antibody) at dilution of 1:100 and Alexa Fluor 488-conjugated AffiniPure Goat Anti-Mouse IgG(H+L).