

C1qC Monoclonal antibody, PBS Only

Catalog Number: 66268-1-PBS

Basic Information

Catalog Number:

66268-1-PBS

Size:

1 mg/ml

Source:

Mouse

Isotype:

IgM

Immunogen Catalog Number:

AG10233

GenBank Accession Number:

BC009016

GeneID (NCBI):

714

UNIPROT ID:

P02747

Full Name:

complement component 1, q
subcomponent, C chain

Calculated MW:

245 aa, 26 kDa

Observed MW:

26 kDa

Purification Method:

Thiophilic affinity chromatograph

CloneNo.:

1C5B4

Applications

Tested Applications:

WB, Indirect ELISA, IF

Species Specificity:

human

Background Information

The first component of complement, C1, is a calcium-dependent complex of the 3 subcomponents C1q, C1r, and C1s. C1q is composed of 18 polypeptide chains: six A-chains, six B-chains, and six C-chains. Each chain contains a collagen-like region located near the N terminus and a C-terminal globular region. Deficiency of C1q has been associated with lupus erythematosus and glomerulonephritis. This antibody is raised against C1qC which is the C-chain polypeptide of human complement subcomponent C1q.

Storage

Storage:

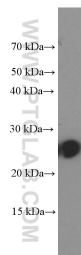
Store at -80°C.

The product is shipped with ice packs. Upon receipt, store it immediately at -80°C

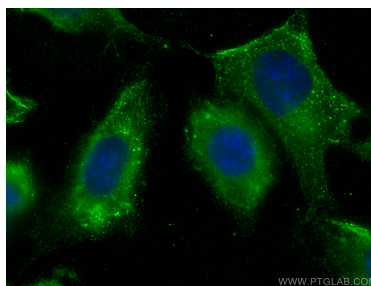
Storage Buffer:

PBS Only

Selected Validation Data



human plasma were subjected to SDS PAGE followed by western blot with 66268-1-Ig (C1QC Antibody) at dilution of 1:2000 incubated at room temperature for 1.5 hours. This data was developed using the same antibody clone with 66268-1-PBS in a different storage buffer formulation.



Immunofluorescent analysis of (-20°C Methanol) fixed HUVEC cells using C1qC antibody (66268-1-Ig, Clone: 1C5B4) at dilution of 1:800 and CoraLite®488-Conjugated AffiniPure Goat Anti-Mouse IgG(H+L). This data was developed using the same antibody clone with 66268-1-PBS in a different storage buffer formulation.