

C1qC Monoclonal antibody

Catalog Number: 66268-1-Ig

4 Publications

Basic Information

Catalog Number:

66268-1-Ig

Size:

680 µg/ml

Source:

Mouse

Isotype:

IgM

Immunogen Catalog Number:

AG10233

GenBank Accession Number:

BC009016

GeneID (NCBI):

714

UNIPROT ID:

P02747

Full Name:

complement component 1, q subcomponent, C chain

Calculated MW:

245 aa, 26 kDa

Observed MW:

26 kDa

Purification Method:

Thiophilic affinity chromatograph

CloneNo.:

1C5B4

Recommended Dilutions:

WB 1:1000-1:4000

IF/ICC 1:400-1:1600

Applications

Tested Applications:

IF/ICC, WB, ELISA

Cited Applications:

WB, IF

Species Specificity:

human

Cited Species:

human, rat

Positive Controls:

WB : human plasma tissue,

IF/ICC : HUVEC cells,

Background Information

The first component of complement, C1, is a calcium-dependent complex of the 3 subcomponents C1q, C1r, and C1s. C1q is composed of 18 polypeptide chains: six A-chains, six B-chains, and six C-chains. Each chain contains a collagen-like region located near the N terminus and a C-terminal globular region. Deficiency of C1q has been associated with lupus erythematosus and glomerulonephritis. This antibody is raised against C1qC which is the C-chain polypeptide of human complement subcomponent C1q.

Notable Publications

Author	Pubmed ID	Journal	Application
Lingyu Pan	35525530	J Ethnopharmacol	WB
Hanji Huang	33707956	Onco Targets Ther	WB
Anika Alberts	32286427	Sci Rep	WB

Storage

Storage:

Store at -20°C. Stable for one year after shipment.

Storage Buffer:

PBS with 0.02% sodium azide and 50% glycerol pH 7.3.

Aliquoting is unnecessary for -20°C storage

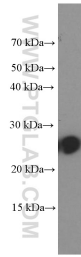
For technical support and original validation data for this product please contact:

T: 4006900926

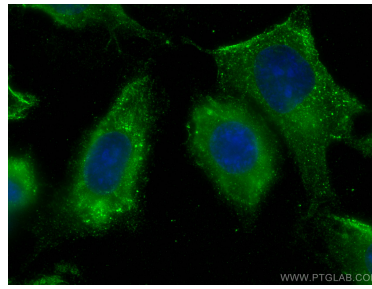
E: Proteintech-CN@ptglab.comW: ptgcn.com

This product is exclusively available under Proteintech Group brand and is not available to purchase from any other manufacturer.

Selected Validation Data



human plasma were subjected to SDS PAGE followed by western blot with 66268-1-Ig (C1QC Antibody) at dilution of 1:2000 incubated at room temperature for 1.5 hours.



Immunofluorescent analysis of (-20°C Methanol) fixed HUVEC cells using C1qC antibody (66268-1-Ig, Clone: 1C5B4) at dilution of 1:800 and CoraLite®488-Conjugated AffiniPure Goat Anti-Mouse IgG(H+L).