

For Research Use Only

SRPX2 Monoclonal antibody

Catalog Number: 66266-1-Ig

Featured Product

3 Publications



Basic Information

Catalog Number:

66266-1-Ig

Size:

1000 μ g/ml

Source:

Mouse

Isotype:

IgG2b

Immunogen Catalog Number:

AG8084

GenBank Accession Number:

BC020733

GeneID (NCBI):

27286

UNIPROT ID:

O60687

Full Name:

sushi-repeat-containing protein, X-linked 2

Calculated MW:

465 aa, 53 kDa

Observed MW:

53 kDa

Purification Method:

Protein A purification

CloneNo.:

2A1D7

Recommended Dilutions:

WB 1:500-1:2000

IHC 1:200-1:800

IF 1:200-1:800

Applications

Tested Applications:

IF/ICC, IHC, WB, ELISA

Cited Applications:

WB, IF, IHC

Species Specificity:

human, pig, mouse

Cited Species:

human, mouse

Note-IHC: suggested antigen retrieval with TE buffer pH 9.0; (*) Alternatively, antigen retrieval may be performed with citrate buffer pH 6.0

Positive Controls:

WB : pig lung tissue, A549 cells

IHC : mouse brain tissue,

IF : A549 cells,

Background Information

SRPX2 (sushi-repeat-containing protein, X-linked 2) is a secreted protein expressed in neurons of the human adult brain, including the rolandic area (PMID: 20874700). Firstly described as sushi-repeat protein up-regulated in leukemia (SPRUL) in leukemia cells with dysregulated expression at the transcriptional level, SRPX2 has been recently shown as a multifunctional protein. SRPX2 is a ligand for uPAR, the urokinase-type plasminogen activator (uPA) receptor (PMID: 18718938). It is involved in seizure disorders, angiogenesis and cellular adhesion (PMID: 22242148; 19667118; 16497722). The involvement of SRPX2 in disorders of language cortex suggests it has an important role in the perisylvian region critical for language and cognitive development (PMID: 16497722).

Notable Publications

Author	Pubmed ID	Journal	Application
Meng Zhang	29881288	Onco Targets Ther	WB,IHC
Mehwish Anwer	29663392	J Comp Neurol	WB,IHC,IF
Jianyun Liu	37543430	Aging (Albany NY)	WB

Storage

Storage:

Store at -20°C. Stable for one year after shipment.

Storage Buffer:

PBS with 0.02% sodium azide and 50% glycerol pH 7.3.

Aliquoting is unnecessary for -20°C storage

For technical support and original validation data for this product please contact:

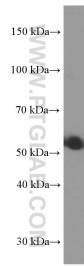
T: 4006900926

E: Proteintech-CN@ptglab.com

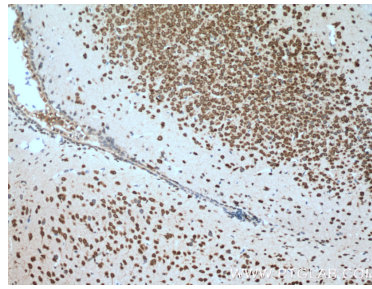
W: ptgcn.com

This product is exclusively available under Proteintech Group brand and is not available to purchase from any other manufacturer.

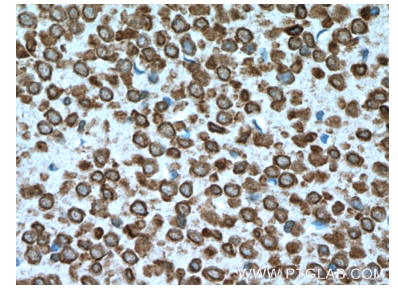
Selected Validation Data



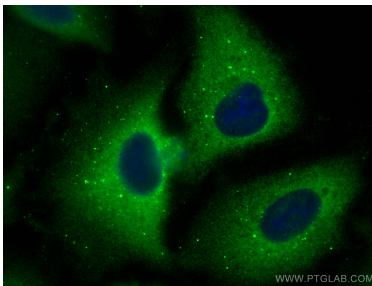
pig lung tissue were subjected to SDS PAGE followed by western blot with 66266-1-Ig (SRPX2 antibody) at dilution of 1:1000 incubated at room temperature for 1.5 hours.



Immunohistochemical analysis of paraffin-embedded mouse brain tissue slide using 66266-1-Ig (SRPX2 Antibody) at dilution of 1:400 (under 10x lens). Heat mediated antigen retrieval with Tris-EDTA buffer (pH 9.0).



Immunohistochemical analysis of paraffin-embedded mouse brain tissue slide using 66266-1-Ig (SRPX2 Antibody) at dilution of 1:400 (under 40x lens). Heat mediated antigen retrieval with Tris-EDTA buffer (pH 9.0).



Immunofluorescent analysis of (-20°C Methanol) fixed A549 cells using SRPX2 antibody (66266-1-Ig, Clone: 2A1D7) at dilution of 1:400 and CoraLite®488-Conjugated AffiniPure Goat Anti-Mouse IgG(H+L).