

For Research Use Only

Serpin E1/PAI-1 Monoclonal antibody, PBS Only

Catalog Number: 66261-1-PBS



Basic Information

Catalog Number: 66261-1-PBS	GenBank Accession Number: BC010860	Purification Method: Protein G purification
Concentration: 1 mg/ml	GeneID (NCBI): 5054	CloneNo.: 1H4A5
Source: Mouse	UNIPROT ID: P05121	
Isotype: IgG1	Full Name: serpin peptidase inhibitor, clade E (nexin, plasminogen activator inhibitor type 1), member 1	
Immunogen Catalog Number: AG22411	Calculated MW: 402 aa, 45 kDa	
	Observed MW: 45-50 kDa	

Applications

Tested Applications:
WB, IHC, IF/ICC, Indirect ELISA

Species Specificity:
human, mouse, pig

Background Information

SERPINE1, also named Plasminogen activator inhibitor type 1 (PAI-1), is a member of the serine protease inhibitor (SERPIN) superfamily. PAI-1 is the principal inhibitor of tissue plasminogen activator (tPA) and uPA, and hence is an inhibitor of fibrinolysis. Defects in this gene are the cause of plasminogen activator inhibitor-1 deficiency (PAI-1 deficiency), and high concentrations of the gene product are associated with thrombophilia. The mature 379-residue protein had a calculated unglycosylated molecular mass of 42.7 kD. Three putative glycosylation sites were found.

Storage

Storage:
Store at -80°C.
The product is shipped with ice packs. Upon receipt, store it immediately at -80°C

Storage Buffer:
PBS only, pH7.3

For technical support and original validation data for this product please contact:

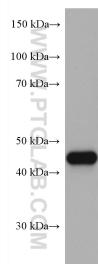
T: 4006900926

E: Proteintech-CN@ptglab.com

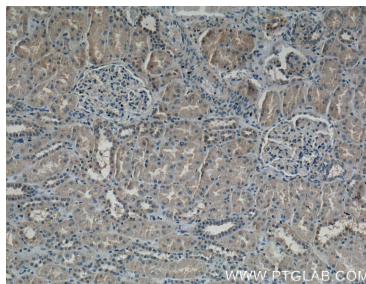
W: ptgcn.com

This product is exclusively available under Proteintech Group brand and is not available to purchase from any other manufacturer.

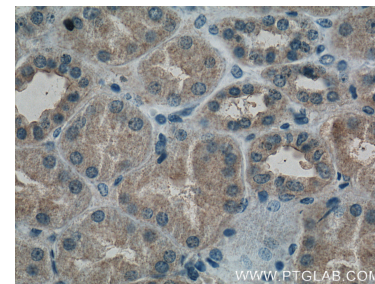
Selected Validation Data



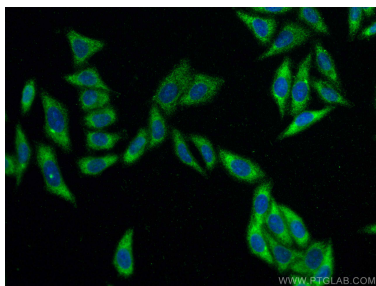
human peripheral blood platelets were subjected to SDS PAGE followed by western blot with 66261-1-Ig (PAI-1 antibody) at dilution of 1:10000 incubated at room temperature for 1.5 hours. This data was developed using the same antibody clone with 66261-1-PBS in a different storage buffer formulation.



Immunohistochemical analysis of paraffin-embedded human kidney tissue slide using 66261-1-Ig (PAI-1 antibody at dilution of 1:200 (under 10x lens). This data was developed using the same antibody clone with 66261-1-PBS in a different storage buffer formulation.



Immunohistochemical analysis of paraffin-embedded human kidney tissue slide using 66261-1-Ig (PAI-1 antibody at dilution of 1:200 (under 40x lens). This data was developed using the same antibody clone with 66261-1-PBS in a different storage buffer formulation.



Immunofluorescent analysis of (-20°C Ethanol) fixed HepG2 cells using PAI-1 antibody (66261-1-Ig, Clone: 1H4A5) at dilution of 1:400 and CoraLite®488-Conjugated AffiniPure Goat Anti-Mouse IgG(H+L). This data was developed using the same antibody clone with 66261-1-PBS in a different storage buffer formulation.