

For Research Use Only

# Serpin E1/PAI-1 Monoclonal antibody

Catalog Number: 66261-1-Ig **22 Publications**



## Basic Information

<b>Catalog Number:</b> 66261-1-Ig	<b>GenBank Accession Number:</b> BC010860	<b>Purification Method:</b> Protein A purification
<b>Concentration:</b> 1000 ug/ml	<b>GeneID (NCBI):</b> 5054	<b>CloneNo.:</b> 1H4A5
<b>Source:</b> Mouse	<b>UNIPROT ID:</b> P05121	<b>Recommended Dilutions:</b> WB 1:5000-1:50000 IHC 1:50-1:500 IF/ICC 1:200-1:800
<b>Isotype:</b> IgG1	<b>Full Name:</b> serpin peptidase inhibitor, clade E (nexin, plasminogen activator inhibitor type 1), member 1	
<b>Immunogen Catalog Number:</b> AG22411	<b>Calculated MW:</b> 402 aa, 45 kDa	
	<b>Observed MW:</b> 45-50 kDa	

## Applications

<b>Tested Applications:</b> WB, IHC, IF/ICC, ELISA	<b>Positive Controls:</b> <b>WB</b> : human peripheral blood platelets, pig liver tissue, pig serum, HuH-7 cells, U-251 cells, SH-SY5Y cells <b>IHC</b> : human kidney tissue, mouse lung tissue <b>IF/ICC</b> : HepG2 cells,
<b>Cited Applications:</b> WB, IHC, IF	
<b>Species Specificity:</b> human, mouse, pig	
<b>Cited Species:</b> human, mouse, rat, pig	
<b>Note-IHC: suggested antigen retrieval with TE buffer pH 9.0; (*) Alternatively, antigen retrieval may be performed with citrate buffer pH 6.0</b>	

## Background Information

SERPINE1, also named Plasminogen activator inhibitor type 1 (PAI-1), is a member of the serine protease inhibitor (SERPIN) superfamily. PAI-1 is the principal inhibitor of tissue plasminogen activator (tPA) and uPA, and hence is an inhibitor of fibrinolysis. Defects in this gene are the cause of plasminogen activator inhibitor-1 deficiency (PAI-1 deficiency), and high concentrations of the gene product are associated with thrombophilia. The mature 379-residue protein had a calculated unglycosylated molecular mass of 42.7 kD. Three putative glycosylation sites were found.

## Notable Publications

Author	Pubmed ID	Journal	Application
Tong Lin	33002827	Phytomedicine	WB
Xinh-Xinh Nguyen	34830489	Int J Mol Sci	WB
Mingming Han	34003736	Am J Respir Cell Mol Biol	WB

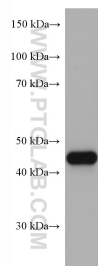
## Storage

**Storage:**  
Store at -20°C. Stable for one year after shipment.  
**Storage Buffer:**  
PBS with 0.02% sodium azide and 50% glycerol  
Aliquoting is unnecessary for -20°C storage

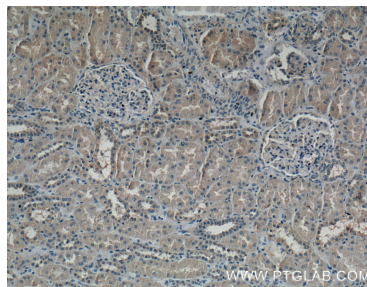
For technical support and original validation data for this product please contact:  
T: 4006900926 E: Proteintech-CN@ptglab.com W: ptgcn.com

This product is exclusively available under Proteintech Group brand and is not available to purchase from any other manufacturer.

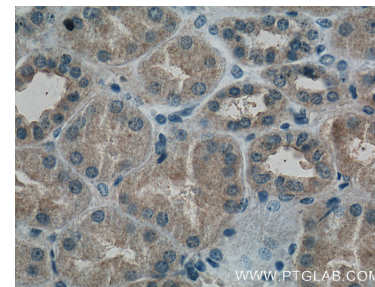
## Selected Validation Data



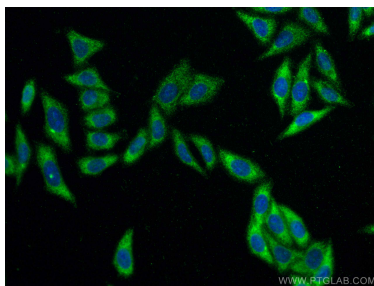
human peripheral blood platelets were subjected to SDS PAGE followed by western blot with 66261-1-Ig (PAI-1 antibody) at dilution of 1:10000 incubated at room temperature for 1.5 hours.



Immunohistochemical analysis of paraffin-embedded human kidney tissue slide using 66261-1-Ig (PAI-1 antibody at dilution of 1:200 (under 10x lens).



Immunohistochemical analysis of paraffin-embedded human kidney tissue slide using 66261-1-Ig (PAI-1 antibody at dilution of 1:200 (under 40x lens).



Immunofluorescent analysis of (-20°C Ethanol) fixed HepG2 cells using PAI-1 antibody (66261-1-Ig, Clone: 1H4A5 ) at dilution of 1:400 and CoraLite®488-Conjugated AffiniPure Goat Anti-Mouse IgG(H+L).