

For Research Use Only

# IMP3 Monoclonal antibody, PBS Only

Catalog Number: 66247-1-PBS



## Basic Information

Catalog Number:

66247-1-PBS

Size:

1mg/ml

Source:

Mouse

Isotype:

IgG2b

Immunogen Catalog Number:

AG23602

GenBank Accession Number:

BC020557

GeneID (NCBI):

55272

UNIPROT ID:

Q9NV31

Full Name:

IMP3, U3 small nucleolar  
ribonucleoprotein, homolog (yeast)

Calculated MW:

184 aa, 22 kDa

Observed MW:

22 kDa

Purification Method:

Protein A purification

CloneNo.:

1E7D6

## Applications

Tested Applications:

Indirect ELISA, IF/ICC, IHC, WB

Species Specificity:

mouse, human

## Background Information

IMP3 is a member of the insulin-like growth factor (IGF-II) mRNA binding protein (IMP) family that consist of IMP1, IMP2, and IMP3. IMP3 is an oncofetal protein associated with aggressive and advanced tumors and is specifically expressed in malignant tumors but not found in benign tissues [PMID:22497850]. IMP3 forms a ternary complex with IMP4 and MPP10 (MPHOSPH10) that interacts with U3 small nucleolar RNA (snoRNA), which is required for the early cleavage steps in pre-rRNA processing [PMID: 12655004].

## Storage

Storage:

Store at -80°C.

The product is shipped with ice packs. Upon receipt, store it immediately at -80°C

Storage Buffer:

PBS Only

For technical support and original validation data for this product please contact:

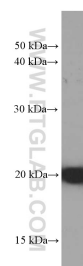
T: 4006900926

E: [Proteintech-CN@ptglab.com](mailto:Proteintech-CN@ptglab.com)

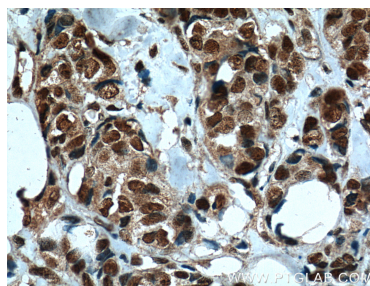
W: [ptgcn.com](http://ptgcn.com)

This product is exclusively available under Proteintech Group brand and is not available to purchase from any other manufacturer.

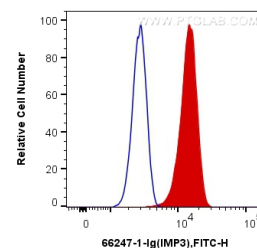
## Selected Validation Data



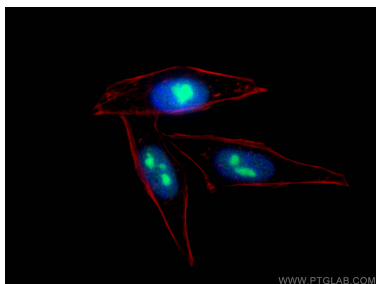
HeLa cells were subjected to SDS PAGE followed by western blot with 66247-1-Ig (IMP3 Antibody) at dilution of 1:2000 incubated at room temperature for 1.5 hours. This data was developed using the same antibody clone with 66247-1-PBS in a different storage buffer formulation.



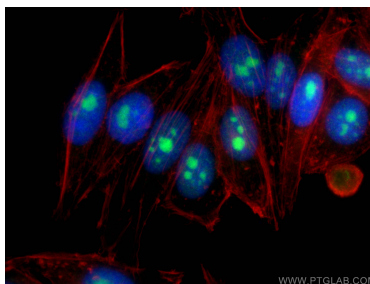
Immunohistochemical analysis of paraffin-embedded human breast cancer tissue slide using 66247-1-Ig (IMP3 Antibody) at dilution of 1:200 (under 40x lens). Heat mediated antigen retrieval with Tris-EDTA buffer (pH 9.0). This data was developed using the same antibody clone with 66247-1-PBS in a different storage buffer formulation.



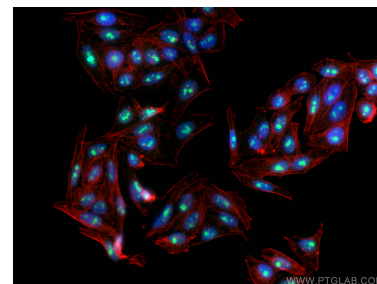
1X10<sup>6</sup> HepG2 cells were intracellularly stained with 0.2 ug Anti-Human IMP3 (66247-1-Ig, Clone:1E7D6) and CoraLite®488-Conjugated AffiniPure Goat Anti-Mouse IgG(H+L) at dilution 1:1000 (red), or 0.2 ug Control Antibody. Cells were fixed and permeabilized with Transcription Factor Staining Buffer Kit (PF00011). This data was developed using the same antibody clone with 66247-1-PBS in a different storage buffer formulation.



Immunofluorescent analysis of (4% PFA) fixed HepG2 cells using IMP3 antibody (66247-1-Ig, Clone: 1E7D6 ) at dilution of 1:400 and CoraLite®488-Conjugated AffiniPure Goat Anti-Mouse IgG(H+L), CL594-Phalloidin (red). This data was developed using the same antibody clone with 66247-1-PBS in a different storage buffer formulation.



Immunofluorescent analysis of (4% PFA) fixed HepG2 cells using IMP3 antibody (66247-1-Ig, Clone: 1E7D6 ) at dilution of 1:400 and CoraLite®488-Conjugated AffiniPure Goat Anti-Mouse IgG(H+L), CL594-Phalloidin (red). This data was developed using the same antibody clone with 66247-1-PBS in a different storage buffer formulation.



Immunofluorescent analysis of (4% PFA) fixed HepG2 cells using IMP3 antibody (66247-1-Ig, Clone: 1E7D6 ) at dilution of 1:400 and CoraLite®488-Conjugated AffiniPure Goat Anti-Mouse IgG(H+L), CL594-Phalloidin (red). This data was developed using the same antibody clone with 66247-1-PBS in a different storage buffer formulation.