

BBS2 Monoclonal antibody

Catalog Number: 66246-1-Ig **2 Publications**

Basic Information

Catalog Number:

66246-1-Ig

Size:

1320 µg/ml

Source:

Mouse

Isotype:

IgG3

Immunogen Catalog Number:

AG21390

GenBank Accession Number:

BC014140

GeneID (NCBI):

583

UNIPROT ID:

Q9BXC9

Full Name:

Bardet-Biedl syndrome 2

Calculated MW:

80 kDa

Observed MW:

80-90 kDa

Purification Method:

Protein A purification

CloneNo.:

2E11B3

Recommended Dilutions:

WB 1:500-1:2000

IF/ICC 1:20-1:200

Applications

Tested Applications:

IF/ICC, WB, ELISA

Cited Applications:

WB

Species Specificity:

human, Canine

Cited Species:

human, mouse

Positive Controls:

WB : K-562 cells,

IF/ICC : MDCK cells,

Background Information

Notable Publications

Author	Pubmed ID	Journal	Application
Poppy Datta	31694913	J Biol Chem	WB
Tina Beyer	29615496	Mol Cell Proteomics	WB

Storage

Storage:

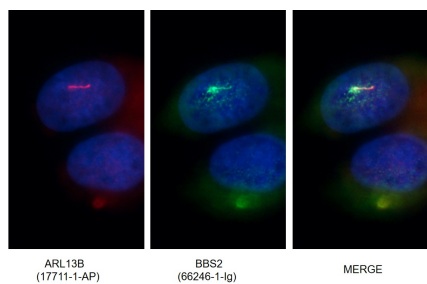
Store at -20°C. Stable for one year after shipment.

Storage Buffer:

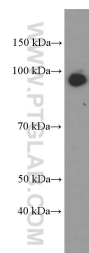
PBS with 0.02% sodium azide and 50% glycerol pH 7.3.

Aliquoting is unnecessary for -20°C storage

Selected Validation Data



Immunofluorescent images of MDCK cells stained with BBS2 mouse mAb (66246-1-Ig) and ARL13B rabbit pAb (17711-1-AP) at dilution of 1:50, further stained with Alexa Fluor 488-conjugated AffiniPure-Goat anti-Mouse IgG (H+L) for 66246-1-Ig, and Alexa Fluor 594-conjugated AffiniPure Goat Anti-Rabbit IgG (H+L) for 17711-1-AP.



K-562 cells were subjected to SDS PAGE followed by western blot with 66246-1-Ig (BBS2 Antibody) at dilution of 1:1000 incubated at room temperature for 1.5 hours.