

For Research Use Only

# C4 Gamma Chain Monoclonal antibody



Catalog Number: 66242-1-Ig

## Basic Information

<b>Catalog Number:</b> 66242-1-Ig	<b>GenBank Accession Number:</b> BC012372	<b>Purification Method:</b> Protein A purification
<b>Size:</b> 1500 µg/ml	<b>GeneID (NCBI):</b> 720	<b>CloneNo.:</b> 2G6A7
<b>Source:</b> Mouse	<b>UNIPROT ID:</b> P0COL4	<b>Recommended Dilutions:</b> WB 1:2000-1:16000 IHC 1:400-1:1600 IF 1:200-1:800
<b>Isotype:</b> IgG1	<b>Full Name:</b> complement component 4A (Rodgers blood group)	
<b>Immunogen Catalog Number:</b> AG10449	<b>Calculated MW:</b> 1744 aa, 193 kDa	
	<b>Observed MW:</b> 31 kDa	

## Applications

### Tested Applications:

IF-P, IHC, WB, ELISA

### Species Specificity:

human

**Note-IHC: suggested antigen retrieval with TE buffer pH 9.0; (\*) Alternatively, antigen retrieval may be performed with citrate buffer pH 6.0**

### Positive Controls:

WB : human plasma tissue,

IHC : human liver tissue,

IF : human liver tissue,

## Background Information

Complement C4, a component of the classical complement pathway, has an important role in innate immune function. C4 protein is expressed as a single chain precursor which is proteolytically cleaved into a trimer of alpha, beta, and gamma chains (molecular weights 95, 78, and 31 kDa) prior to secretion. The alpha chain is cleaved to release C4 anaphylatoxin, an antimicrobial peptide and a mediator of local inflammation. This antibody raised against 1543-1744aa of human C4-A protein recognizes C4 gamma chain.

## Storage

### Storage:

Store at -20°C. Stable for one year after shipment.

### Storage Buffer:

PBS with 0.02% sodium azide and 50% glycerol pH 7.3.

Aliquoting is unnecessary for -20°C storage

For technical support and original validation data for this product please contact:

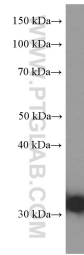
T: 4006900926

E: [Proteintech-CN@ptglab.com](mailto:Proteintech-CN@ptglab.com)

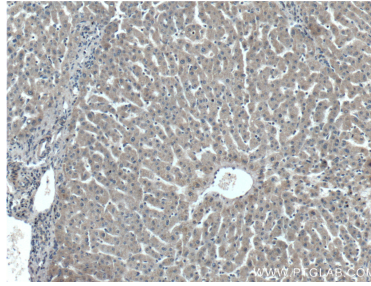
W: [ptgcn.com](http://ptgcn.com)

**This product is exclusively available under Proteintech Group brand and is not available to purchase from any other manufacturer.**

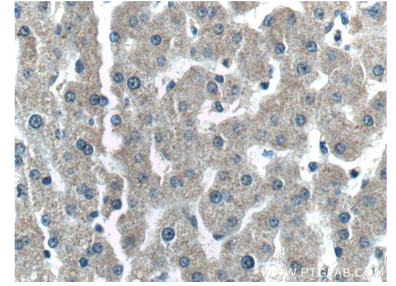
## Selected Validation Data



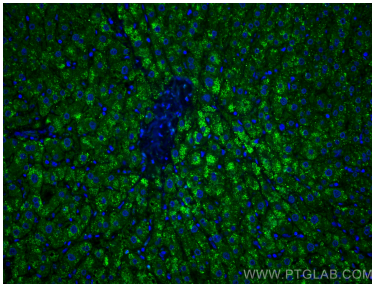
human plasma were subjected to SDS PAGE followed by western blot with 66242-1-Ig (C4 gamma chain antibody) at dilution of 1:8000 incubated at room temperature for 1.5 hours.



Immunohistochemical analysis of paraffin-embedded human liver tissue slide using 66242-1-Ig (C4 gamma chain antibody) at dilution of 1:800 (under 10x lens).



Immunohistochemical analysis of paraffin-embedded human liver tissue slide using 66242-1-Ig (C4 gamma chain antibody) at dilution of 1:800 (under 40x lens).



Immunofluorescent analysis of (4% PFA) fixed human liver tissue using C4 Gamma Chain antibody (66242-1-Ig, Clone: 2G6A7) at dilution of 1:400 and CoraLite@488-Conjugated AffiniPure Goat Anti-Mouse IgG(H+L).