

For Research Use Only

# p38 MAPK Monoclonal antibody, PBS Only (Capture)

Catalog Number: 66234-1-PBS

Featured Product



## Basic Information

Catalog Number:

66234-1-PBS

Concentration:

1000 µg/ml

Source:

Mouse

Isotype:

IgG2b

Immunogen Catalog Number:

AG5797

GenBank Accession Number:

BC031574

GeneID (NCBI):

1432

UNIPROT ID:

Q16539

Full Name:

mitogen-activated protein kinase 14

Calculated MW:

360 aa, 41 kDa

Observed MW:

38-42 kDa

Purification Method:

Protein A purification

CloneNo.:

1A1C2

## Applications

Tested Applications:

WB, IHC, IF/ICC, Cytometric bead array, Indirect ELISA

Species Specificity:

human, mouse, rat, pig

## Background Information

MAPK14 (mitogen-activated protein kinase 14) is also named as SAPIK2A, p38MAPK, CSBP1, RK, p38, EXIP, Mxi2, CSBP2, PRKM14, PRKM15, CSPB1, p38ALPHA and belongs to the MAP kinase subfamily. MAPK14-signaling is a central pathway for the integration of instructive signals in dendritic cells for T(H)17 differentiation and inflammation (PMID:22231518). It plays an important role in the regulation of hematopoietic stem cell self-renewal in vitro and inhibition of MAPK14 activation with a small molecule inhibitor may represent a novel approach to promote ex vivo expansion of hematopoietic stem cell (PMID:21198398). This protein has 4 isoforms produced by alternative splicing.

## Storage

Storage:

Store at -80°C.

The product is shipped with ice packs. Upon receipt, store it immediately at -80°C

Storage Buffer:

PBS Only

For technical support and original validation data for this product please contact:

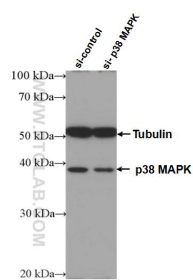
T: 4006900926

E: Proteintech-CN@ptglab.com

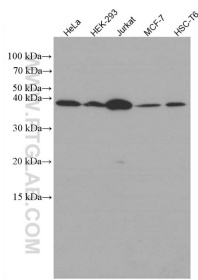
W: ptgcn.com

This product is exclusively available under Proteintech Group brand and is not available to purchase from any other manufacturer.

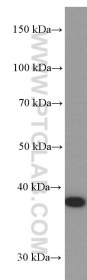
Selected Validation Data



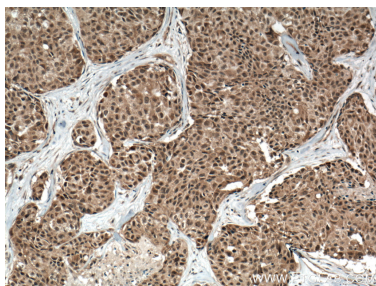
WB result of p38 MAPK antibody (66234-1-Ig; 1:1000; incubated at room temperature for 1.5 hours) with sh-Control and sh-p38 MAPK transfected HEK-293 cells. This data was developed using the same antibody clone with 66234-1-PBS in a different storage buffer formulation.



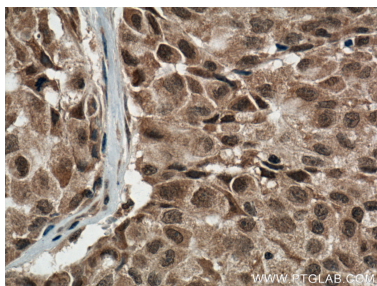
Various lysates were subjected to SDS PAGE followed by western blot with 66234-1-Ig (p38 MAPK antibody) at dilution of 1:5000 incubated at room temperature for 1.5 hours. This data was developed using the same antibody clone with 66234-1-PBS in a different storage buffer formulation.



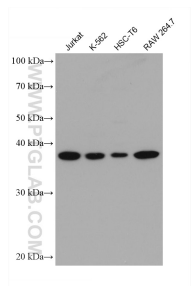
human heart tissue were subjected to SDS PAGE followed by western blot with 66234-1-Ig (p38 MAPK Antibody) at dilution of 1:2000 incubated at room temperature for 1.5 hours. This data was developed using the same antibody clone with 66234-1-PBS in a different storage buffer formulation.



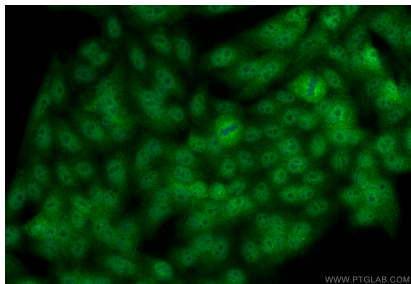
Immunohistochemical analysis of paraffin-embedded human lung cancer tissue slide using 66234-1-Ig (p38 MAPK antibody) at dilution of 1:500 (under 10x lens). Heat mediated antigen retrieval with Tris-EDTA buffer (pH 9.0). This data was developed using the same antibody clone with 66234-1-PBS in a different storage buffer formulation.



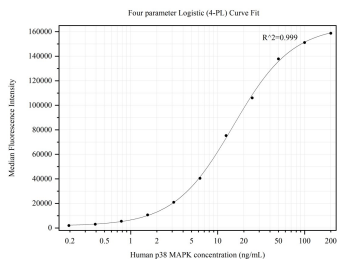
Immunohistochemical analysis of paraffin-embedded human lung cancer tissue slide using 66234-1-Ig (p38 MAPK antibody) at dilution of 1:500 (under 40x lens). Heat mediated antigen retrieval with Tris-EDTA buffer (pH 9.0). This data was developed using the same antibody clone with 66234-1-PBS in a different storage buffer formulation.



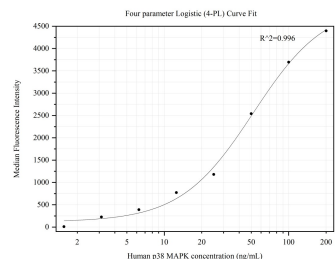
Various lysates were subjected to SDS PAGE followed by western blot with 66234-1-Ig (p38 MAPK antibody) at dilution of 1:20000 incubated at room temperature for 1.5 hours. This data was developed using the same antibody clone with 66234-1-PBS in a different storage buffer formulation.



Immunofluorescent analysis of (4% PFA) fixed HepG2 cells using p38 MAPK antibody (66234-1-Ig, Clone: 1A1C2 ) at dilution of 1:2000 and CoraLite®488-Conjugated Goat Anti-Mouse IgG(H+L) (SA00013-1). This data was developed using the same antibody clone with 66234-1-PBS in a different storage buffer formulation.



Cytometric bead array standard curve of MP50419-1, p38 MAPK Monoclonal Matched Antibody Pair, PBS Only. Capture antibody: 66234-1-PBS. Detection antibody: 68965-1-PBS. Standard:Ag5797. Range: 0.195-200 ng/mL.



Cytometric bead array standard curve of MP50419-2, p38 MAPK Monoclonal Matched Antibody Pair, PBS Only. Capture antibody: 66234-1-PBS. Detection antibody: 68966-1-PBS. Standard:Ag5797. Range: 1.563-200 ng/mL.