

For Research Use Only

Pikachurin Monoclonal antibody

Catalog Number: 66232-1-Ig



Basic Information

Catalog Number: 66232-1-Ig	GenBank Accession Number: BC033177	Purification Method: Protein A purification
Size: 2800 µg/ml	GeneID (NCBI): 133584	CloneNo.: 1C6D12
Source: Mouse	UNIPROT ID: Q63HQ2	Recommended Dilutions: WB 1:500-1:2000 IF 1:200-1:800
Isotype: IgG1	Full Name: EGF-like, fibronectin type III and laminin G domains	
Immunogen Catalog Number: AG6362	Calculated MW: 111 kDa	
	Observed MW: 111 kDa, 55-60 kDa	

Applications

Tested Applications: IF/ICC, WB, ELISA	Positive Controls:
Species Specificity: human	WB: human retina tissue, PC-3 cells IF: Y79 cells,

Background Information

Pikachurin, also known as EGFLAM or FLJ39155, is an extracellular matrix-like retinal protein that has been found to localize in the synaptic cleft of the photoreceptor ribbon synapse (PMID: 18641643). Pikachurin is a dystroglycan-interacting protein and has an essential role in photoreceptor ribbon synapse formation. Pikachurin is a 1017-amino-acid protein with a calculated molecular weight of 111 kDa and high mRNA abundance in retina. This monoclonal antibody detects two bands of 111 kDa and 55-60 kDa. The lower-molecular-weight band has been reported and likely represents a fragment resulting from cleavage of Pikachurin (PMID: 23226524).

Storage

Storage:
Store at -20°C. Stable for one year after shipment.
Storage Buffer:
PBS with 0.02% sodium azide and 50% glycerol pH 7.3.
Aliquoting is unnecessary for -20°C storage

For technical support and original validation data for this product please contact:

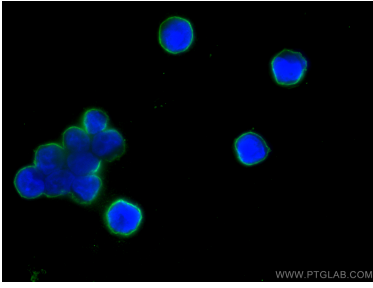
T: 4006900926

E: Proteintech-CN@ptglab.com

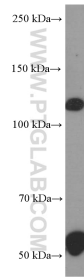
W: ptgcn.com

This product is exclusively available under Proteintech Group brand and is not available to purchase from any other manufacturer.

Selected Validation Data



Immunofluorescent analysis of (4% PFA) fixed Y79 cells using Pikachurin antibody (66232-1-Ig, Clone: 1C6D12) at dilution of 1:400 and CoraLite®488-Conjugated AffiniPure Goat Anti-Mouse IgG(H+L).



human retina tissue were subjected to SDS PAGE followed by western blot with 66232-1-Ig (Pikachurin antibody at dilution of 1:1000 incubated at room temperature for 1.5 hours.