

For Research Use Only

CD68 Monoclonal antibody, PBS Only (Capture)

Catalog Number: 66231-1-PBS



Basic Information

Catalog Number:	66231-1-PBS	GenBank Accession Number:	BC015557	Purification Method:	Protein A purification
Size:	1mg/ml	GeneID (NCBI):	968	CloneNo.:	3F10E11
Source:	Mouse	UNIPROT ID:	P34810		
Isotype:	IgG1	Full Name:	CD68 molecule		
Immunogen Catalog Number:	AG22815	Calculated MW:	37 kDa		

Applications

Tested Applications:
Cytometric bead array, Indirect ELISA

Species Specificity:
human, mouse

Background Information

CD68 is a type I transmembrane glycoprotein that is highly expressed by human monocytes and tissue macrophages. It belongs to the lysosomal/endosomal-associated membrane glycoprotein (LAMP) family and primarily localizes to lysosomes and endosomes with a smaller fraction circulating to the cell surface. CD68 is also a member of the scavenger receptor family. It may play a role in phagocytic activities of tissue macrophages.

Storage

Storage:
Store at -80°C.
The product is shipped with ice packs. Upon receipt, store it immediately at -80°C

Storage Buffer:
PBS Only

For technical support and original validation data for this product please contact:

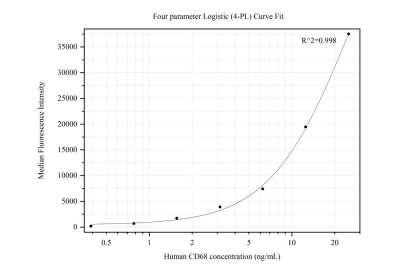
T: 4006900926

E: Proteintech-CN@ptglab.com

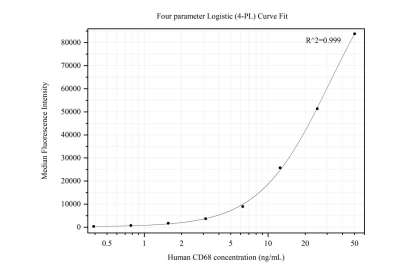
W: ptgcn.com

This product is exclusively available under Proteintech Group brand and is not available to purchase from any other manufacturer.

Selected Validation Data



Cytometric bead array standard curve of MP50230-1, CD68 Monoclonal Matched Antibody Pair, PBS Only. Capture antibody: 66231-1-PBS. Detection antibody: 66231-3-PBS. Standard:Ag22815. Range: 0.391-25 ng/mL



Cytometric bead array standard curve of MP50230-2, CD68 Monoclonal Matched Antibody Pair, PBS Only. Capture antibody: 66231-1-PBS. Detection antibody: 66231-4-PBS. Standard:Ag22815. Range: 0.391-50 ng/mL