

For Research Use Only

# Haptoglobin Monoclonal antibody, PBS Only



Catalog Number: 66229-1-PBS

## Basic Information

Catalog Number: 66229-1-PBS	GenBank Accession Number: BC058031	Purification Method: Protein A purification
Size: 1 mg/ml	GeneID (NCBI): 3240	CloneNo.: 3B4B9
Source: Mouse	UNIPROT ID: P00738	
Isotype: IgG2b	Full Name: haptoglobin	
Immunogen Catalog Number: AG9927	Calculated MW: 281aa, 31 kDa; 228aa, 25 kDa	
	Observed MW: 42 kDa	

## Applications

Tested Applications:  
WB, Indirect ELISA, IHC

Species Specificity:  
human, pig

## Background Information

HP (Haptoglobin) is also named as zonulin and belongs to the peptidase S1 family. HP, a plasma glycoprotein that binds free hemoglobin, has a tetrameric structure of 2 alpha (16 kDa and 9 kDa) and 2 beta (40 kDa) polypeptides that are covalently associated by disulfide bonds. In most species, apart from ruminants, Hp has a molecular mass of 100 kDa, consisting of two subunits of 40 kDa and two subunits of 9 kDa, although in a few species, such as man, genetic variant of Hp forms polymers of higher mass (PMID:2361363). Recent studies of haptoglobin show that certain oligosaccharide structures predominate in different diseases. For example, a highly-fucosylated structure is found in breast cancer and ovarian cancer, highly-sialylated structures in Crohn's disease and highly branched structures in alcoholic liver disease and fucosylated haptoglobin is a good serum marker for pancreatic cancer. (PMID:16385567).

## Storage

Storage:  
Store at -80°C.  
**The product is shipped with ice packs. Upon receipt, store it immediately at -80°C**

Storage Buffer:  
PBS Only

For technical support and original validation data for this product please contact:

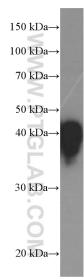
T: 4006900926

E: [Proteintech-CN@ptglab.com](mailto:Proteintech-CN@ptglab.com)

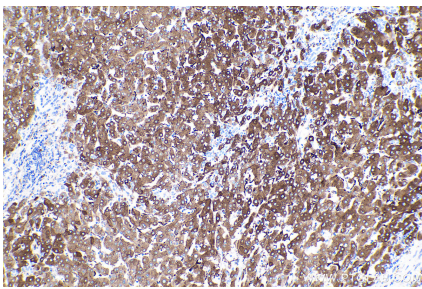
W: [ptgcn.com](http://ptgcn.com)

**This product is exclusively available under Proteintech Group brand and is not available to purchase from any other manufacturer.**

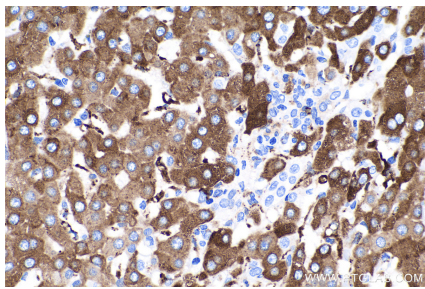
## Selected Validation Data



0.5  $\mu$ l human plasma was subjected to SDS PAGE followed by western blot with 66229-1-Ig (HP Antibody) at dilution of 1:40000 incubated at room temperature for 1.5 hours. This data was developed using the same antibody clone with 66229-1-PBS in a different storage buffer formulation.



Immunohistochemical analysis of paraffin-embedded human liver cancer tissue slide using 66229-1-Ig (Haptoglobin antibody) at dilution of 1:8000 (under 10x lens). Heat mediated antigen retrieval with Tris-EDTA buffer (pH 9.0). This data was developed using the same antibody clone with 66229-1-PBS in a different storage buffer formulation.



Immunohistochemical analysis of paraffin-embedded human liver cancer tissue slide using 66229-1-Ig (Haptoglobin antibody) at dilution of 1:8000 (under 40x lens). Heat mediated antigen retrieval with Tris-EDTA buffer (pH 9.0). This data was developed using the same antibody clone with 66229-1-PBS in a different storage buffer formulation.