

For Research Use Only

MYH2-specific Monoclonal antibody, PBS Only

Catalog Number: 66212-1-PBS



Basic Information

Catalog Number:

66212-1-PBS

Size:

1mg/ml

Source:

Mouse

Isotype:

IgG2b

GenBank Accession Number:

NM_017534

GeneID (NCBI):

4620

UNIPROT ID:

Q9UIKX2

Full Name:

myosin, heavy chain 2, skeletal muscle, adult

Calculated MW:

223 kDa

Observed MW:

200 kDa

Purification Method:

Protein A purification

CloneNo.:

1F1B6

Applications

Tested Applications:

WB, IHC, Indirect ELISA

Species Specificity:

human

Background Information

MYH2 (Myosin II) is a member of the class II or conventional myosin heavy chains. Myosin II was first isolated from muscle but is also found in non muscle cells, and it is especially enriched in highly motile cell types such as amoebae. It forms bipolar filaments that interact with actin filaments to produce contraction. And it is the motor protein that generates force to drive muscle contraction. Functions in skeletal muscle contraction. The antibody is specific to MYH2, will not bind other myosins. It is a skeletal muscle specific antibody.

Storage

Storage:

Store at -80°C.

The product is shipped with ice packs. Upon receipt, store it immediately at -80°C

Storage Buffer:

PBS Only

For technical support and original validation data for this product please contact:

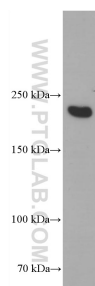
T: 4006900926

E: Proteintech-CN@ptglab.com

W: ptgcn.com

This product is exclusively available under Proteintech Group brand and is not available to purchase from any other manufacturer.

Selected Validation Data



human skeletal muscle tissue were subjected to SDS PAGE followed by western blot with 66212-1-Ig (Myosin 2a antibody) at dilution of 1:100000 incubated at room temperature for 1.5 hours. This data was developed using the same antibody clone with 66212-1-PBS in a different storage buffer formulation.



Immunohistochemical analysis of paraffin-embedded human skeletal muscle tissue slide using 66212-1-Ig (Myosin 2a Antibody) at dilution of 1:100 (under 10x lens). This data was developed using the same antibody clone with 66212-1-PBS in a different storage buffer formulation.