

For Research Use Only

Beta-2-Microglobulin Monoclonal antibody, PBS Only



Catalog Number: 66207-1-PBS

Basic Information

Catalog Number:

66207-1-PBS

Size:

1 mg/ml

Source:

Mouse

Isotype:

IgG2b

GenBank Accession Number:

BC032589

GeneID (NCBI):

567

ENSEMBL Gene ID:

ENSG00000166710

UNIPROT ID:

P61769

Full Name:

beta-2-microglobulin

Calculated MW:

14 kDa

Observed MW:

13 kDa

Purification Method:

Protein A purification

CloneNo.:

1C3B7

Applications

Tested Applications:

WB, IHC, IF, ELISA

Species Specificity:

human

Background Information

Beta-2-microglobulin (B2M) is a component of MHC class I molecules, which are present on the surface of nearly all nucleated cells. It can be found in body fluids under physiologic conditions as a result of shedding from cell surfaces or intracellular release. B2M has various biological functions, including antigen presentation. Investigations reveal that increased synthesis and release of B2M are present in several malignant diseases.

Storage

Storage:

Store at -80°C.

The product is shipped with ice packs. Upon receipt, store it immediately at -80°C

Storage Buffer:

PBS only

For technical support and original validation data for this product please contact:

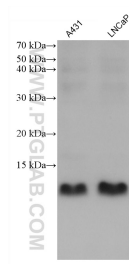
T: 4006900926

E: Proteintech-CN@ptglab.com

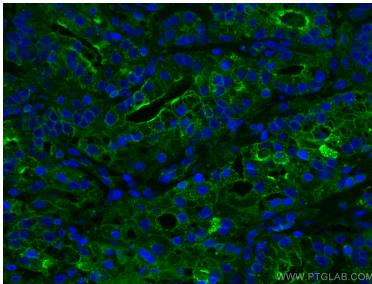
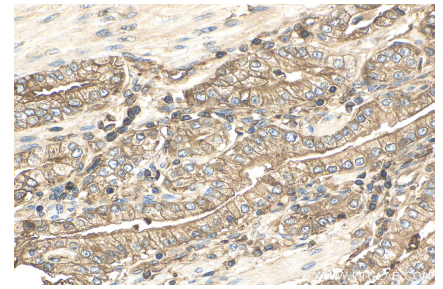
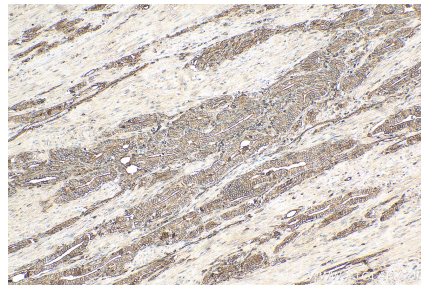
W: ptgcn.com

This product is exclusively available under Proteintech Group brand and is not available to purchase from any other manufacturer.

Selected Validation Data



Various lysates were subjected to SDS PAGE followed by western blot with 66207-1-Ig (Beta-2-Microglobulin antibody) at dilution of 1:5000 incubated at room temperature for 1.5 hours. This data was developed using the same antibody clone with 66207-1-PBS in a different storage buffer formulation.



Immunofluorescent analysis of (4% PFA) fixed human prostate cancer tissue using Beta-2-Microglobulin antibody (66207-1-Ig, Clone: 1C3B7) at dilution of 1:400 and CoraLite®488-Conjugated AffiniPure Goat Anti-Mouse IgG(H+L). This data was developed using the same antibody clone with 66207-1-PBS in a different storage buffer formulation.