

For Research Use Only

# Beta-2-Microglobulin Monoclonal antibody

Catalog Number: 66207-1-Ig **3 Publications**



## Basic Information

Catalog Number:

66207-1-Ig

Size:

1000 ug/ml

Source:

Mouse

Isotype:

IgG2b

GenBank Accession Number:

BC032589

GeneID (NCBI):

567

ENSEMBL Gene ID:

ENSG00000166710

UNIPROT ID:

P61769

Full Name:

beta-2-microglobulin

Calculated MW:

14 kDa

Observed MW:

13 kDa

Purification Method:

Protein A purification

CloneNo.:

1C3B7

Recommended Dilutions:

WB 1:2000-1:10000

IHC 1:250-1:1000

IF-P 1:200-1:800

## Applications

Tested Applications:

WB, IHC, IF-P, ELISA

Cited Applications:

WB

Species Specificity:

human

Cited Species:

human, mouse, monkey

**Note-IHC: suggested antigen retrieval with TE buffer pH 9.0; (\*) Alternatively, antigen retrieval may be performed with citrate buffer pH 6.0**

Positive Controls:

WB : A431 cells, Raji cells, LNCaP cells

IHC : human prostate cancer tissue, human renal cell carcinoma tissue

IF-P : human prostate cancer tissue,

## Background Information

Beta-2-microglobulin (B2M) is a component of MHC class I molecules, which are present on the surface of nearly all nucleated cells. It can be found in body fluids under physiologic conditions as a result of shedding from cell surfaces or intracellular release. B2M has various biological functions, including antigen presentation. Investigations reveal that increased synthesis and release of B2M are present in several malignant diseases.

## Notable Publications

Author	Pubmed ID	Journal	Application
Kang Yang	39651859	J Virol	WB
Jiaqi Wu	39024058	J Agric Food Chem	WB
Jihua Tian	38355278	J Immunother Cancer	WB

## Storage

Storage:

Store at -20°C. Stable for one year after shipment.

Storage Buffer:

PBS with 0.02% sodium azide and 50% glycerol pH 7.3.

Aliquoting is unnecessary for -20°C storage

For technical support and original validation data for this product please contact:

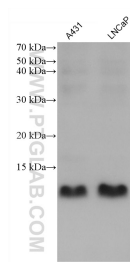
T: 4006900926

E: Proteintech-CN@ptglab.com

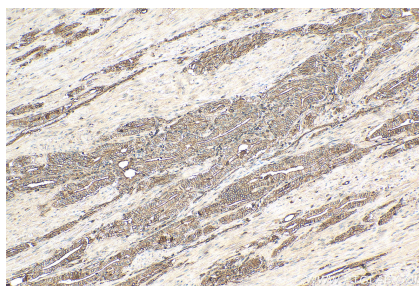
W: ptgcn.com

**This product is exclusively available under Proteintech Group brand and is not available to purchase from any other manufacturer.**

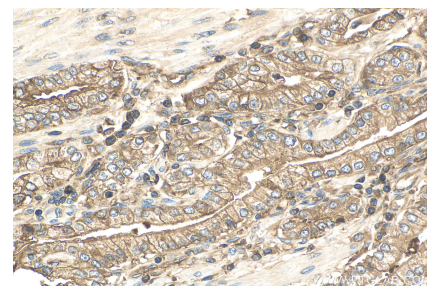
## Selected Validation Data



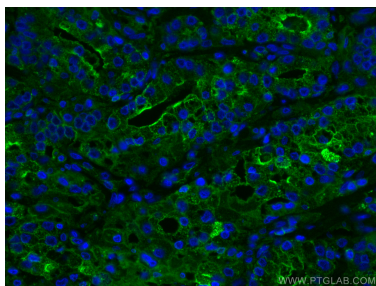
Various lysates were subjected to SDS PAGE followed by western blot with 66207-1-Ig (Beta-2-Microglobulin antibody) at dilution of 1:5000 incubated at room temperature for 1.5 hours.



Immunohistochemical analysis of paraffin-embedded human prostate cancer tissue slide using 66207-1-Ig (Beta-2-Microglobulin antibody) at dilution of 1:500 (under 10x lens). Heat mediated antigen retrieval with Tris-EDTA buffer (pH 9.0).



Immunohistochemical analysis of paraffin-embedded human prostate cancer tissue slide using 66207-1-Ig (Beta-2-Microglobulin antibody) at dilution of 1:500 (under 40x lens). Heat mediated antigen retrieval with Tris-EDTA buffer (pH 9.0).



Immunofluorescent analysis of (4% PFA) fixed human prostate cancer tissue using Beta-2-Microglobulin antibody (66207-1-Ig, Clone: 1C3B7) at dilution of 1:400 and CoraLite®488-Conjugated Goat Anti-Mouse IgG(H+L).