

For Research Use Only

SERPINE2 Monoclonal antibody, PBS Only



Catalog Number: 66203-1-PBS

Basic Information

Catalog Number: 66203-1-PBS	GenBank Accession Number: BC015663	Purification Method: Protein G purification
Size: 1mg/ml	GeneID (NCBI): 5270	CloneNo.: 1E11F12
Source: Mouse	UNIPROT ID: P07093	
Isotype: IgG1	Full Name: serpin peptidase inhibitor, clade E (nexin, plasminogen activator inhibitor type 1), member 2	
Immunogen Catalog Number: AG1830	Calculated MW: 44 kDa	
	Observed MW: 44 kDa	

Applications

Tested Applications:
WB, IF, IHC, Indirect ELISA

Species Specificity:
human, mouse, rat

Background Information

SERPINE2 also called protease nexin-1 or glial-derived neurite promoting factor, is a member of the serine protease inhibitor (SERPIN) superfamily. It would be a potent inhibitor of the urokinase-plasminogen activator (uPA), tissue-type PA (tPA), thrombin, trypsin, factor X_{ia}, and prolasin. SERPINE2 is widely expressed in various tissues, including endothelial cells, fibroblasts, smooth muscle cells, tumor cells, glial cells, neurons, and placental cells.

Storage

Storage:
Store at -80°C.
The product is shipped with ice packs. Upon receipt, store it immediately at -80°C

Storage Buffer:
PBS Only

For technical support and original validation data for this product please contact:

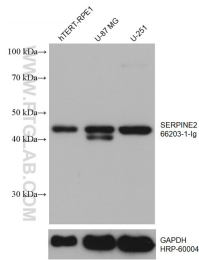
T: 4006900926

E: Proteintech-CN@ptglab.com

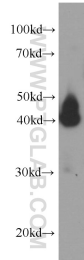
W: ptgcn.com

This product is exclusively available under Proteintech Group brand and is not available to purchase from any other manufacturer.

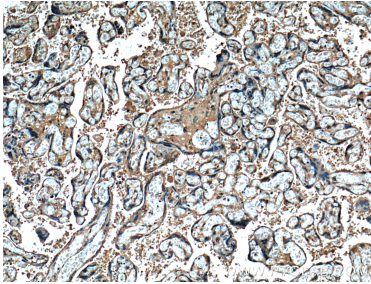
Selected Validation Data



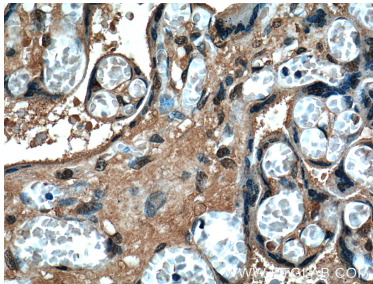
Various lysates were subjected to SDS PAGE followed by western blot with 66203-1-Ig (SERPINE2 antibody) at dilution of 1:10000 incubated at room temperature for 1.5 hours. The membrane was stripped and reblotted with HRP-conjugated GAPDH Monoclonal antibody (HRP-60004) as loading control. This data was developed using the same antibody clone with 66203-1-PBS in a different storage buffer formulation.



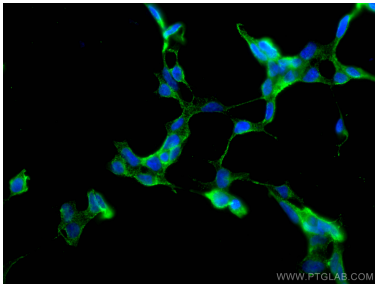
HEK-293 cells were subjected to SDS PAGE followed by western blot with 66203-1-Ig (SERPINE2 Antibody) at dilution of 1:2000 incubated at room temperature for 1.5 hours. This data was developed using the same antibody clone with 66203-1-PBS in a different storage buffer formulation.



Immunohistochemical analysis of paraffin-embedded human placenta tissue slide using 66203-1-Ig (SERPINE2 Antibody) at dilution of 1:200 (under 10x lens). This data was developed using the same antibody clone with 66203-1-PBS in a different storage buffer formulation.



Immunohistochemical analysis of paraffin-embedded human placenta tissue slide using 66203-1-Ig (SERPINE2 Antibody) at dilution of 1:200 (under 40x lens). This data was developed using the same antibody clone with 66203-1-PBS in a different storage buffer formulation.



Immunofluorescent analysis of (4% PFA) fixed HEK-293 cells using SERPINE2 antibody (66203-1-Ig, Clone: 1E11F12) at dilution of 1:400 and CoraLite® 488-Conjugated AffiniPure Goat Anti-Mouse IgG(H+L). This data was developed using the same antibody clone with 66203-1-PBS in a different storage buffer formulation.