

For Research Use Only

BSA Monoclonal antibody

Catalog Number: 66201-1-Ig **18 Publications**



Basic Information

Catalog Number:

66201-1-Ig

Concentration:

1000 ug/ml

Source:

Mouse

Isotype:

IgG1

GenBank Accession Number:

GeneID (NCBI):

280717

Full Name:

bovine serum albumin

Observed MW:

67 kDa

Purification Method:

Protein A purification

CloneNo.:

2D11G3

Recommended Dilutions:

WB 1:5000-1:50000

Applications

Tested Applications:

WB, ELISA

Cited Applications:

WB, IF

Species Specificity:

bovine

Cited Species:

human, mouse, pcn033

Positive Controls:

WB : bsa, Bovine serum tissue

Background Information

BSA, also named as ALB and Bovine Serum albumin, is the main protein of plasma. It has a good binding capacity for water, Ca²⁺, Na⁺, K⁺, fatty acids, hormones, bilirubin and drugs. Its main function is the regulation of the colloidal osmotic pressure of blood.

Notable Publications

Author	Pubmed ID	Journal	Application
Jorge Sanz-Ros	36260670	Sci Adv	WB
Xiaoyin Wang	33068832	Mol Immunol	WB
Feng Liu	28164791	Microbiol Res	WB

Storage

Storage:

Store at -20°C. Stable for one year after shipment.

Storage Buffer:

PBS with 0.02% sodium azide and 50% glycerol pH 7.3.

Aliquoting is unnecessary for -20°C storage

For technical support and original validation data for this product please contact:

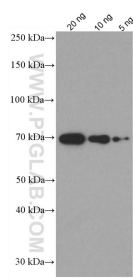
T: 4006900926

E: Proteintech-CN@ptglab.com

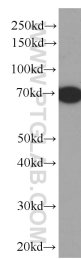
W: ptgcn.com

This product is exclusively available under Proteintech Group brand and is not available to purchase from any other manufacturer.

Selected Validation Data



20ng, 10ng and 5ng BSA were subjected to SDS PAGE followed by western blot with 66201-1-Ig (BSA Antibody) at dilution of 1:10000 incubated at room temperature for 1.5 hours.



Bovine serum were subjected to SDS PAGE followed by western blot with 66201-1-Ig (BSA Antibody) at dilution of 1:4000 incubated at room temperature for 1.5 hours.