

For Research Use Only

IDH1 Monoclonal antibody, PBS Only (Detector)

Catalog Number: 66197-1-PBS



Basic Information

Catalog Number: 66197-1-PBS	GenBank Accession Number: BC012846	Purification Method: Protein A purification
Concentration: 1mg/ml	GeneID (NCBI): 3417	CloneNo.: 2A6A2
Source: Mouse	UNIPROT ID: O75874	
Isotype: IgG1	Full Name: isocitrate dehydrogenase 1 (NADP+), soluble	
Immunogen Catalog Number: AG19293	Calculated MW: 414 aa, 47 kDa	
	Observed MW: 46 kDa	

Applications

Tested Applications:
WB, IHC, IF/ICC, FC (Intra), Cytometric bead array,
Indirect ELISA

Species Specificity:
human

Background Information

IDH1, also named as PICD and IDP, belongs to the isocitrate and isopropylmalate dehydrogenases family. It is a common feature of a major subset of primary human brain cancers. It can form a homodimer(PMID:15173171). IDH1 mutation is always heterozygotic and IDH1 functions as a dimer, theoretically there will be 25% each wild type and mutant homo-dimers and 50% hetero-dimers present in the tumor cells(PMID:21079649).

Storage

Storage:
Store at -80°C.
The product is shipped with ice packs. Upon receipt, store it immediately at -80°C

Storage Buffer:
PBS only, pH7.3

For technical support and original validation data for this product please contact:

T: 4006900926

E: Proteintech-CN@ptglab.com

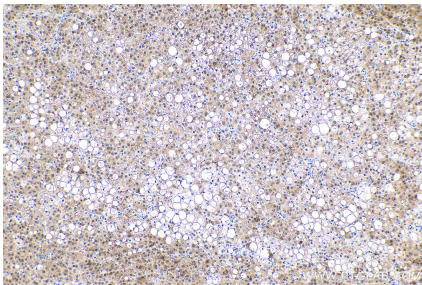
W: ptgcn.com

This product is exclusively available under Proteintech Group brand and is not available to purchase from any other manufacturer.

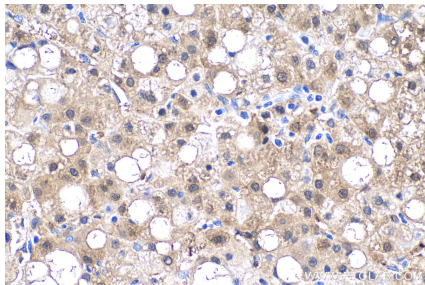
Selected Validation Data



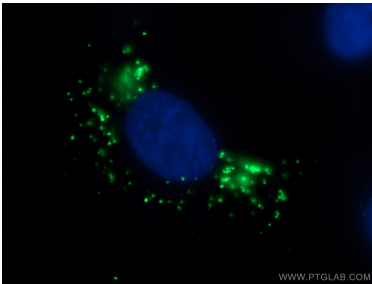
HepG2 cells were subjected to SDS PAGE followed by western blot with 66197-1-Ig (IDH1 antibody) at dilution of 1:3000 incubated at room temperature for 1.5 hours. This data was developed using the same antibody clone with 66197-1-PBS in a different storage buffer formulation.



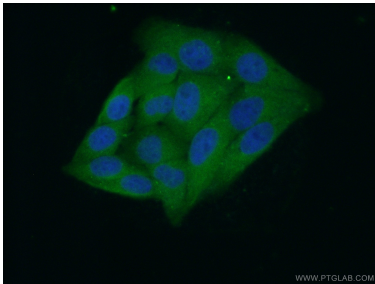
Immunohistochemical analysis of paraffin-embedded human liver cancer tissue slide using 66197-1-Ig (IDH1 antibody) at dilution of 1:4000 (under 10x lens). Heat mediated antigen retrieval with Tris-EDTA buffer (pH 9.0). This data was developed using the same antibody clone with 66197-1-PBS in a different storage buffer formulation.



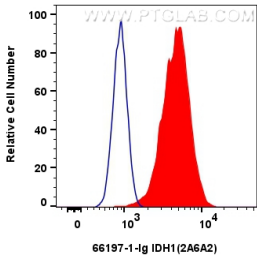
Immunohistochemical analysis of paraffin-embedded human liver cancer tissue slide using 66197-1-Ig (IDH1 antibody) at dilution of 1:4000 (under 40x lens). Heat mediated antigen retrieval with Tris-EDTA buffer (pH 9.0). This data was developed using the same antibody clone with 66197-1-PBS in a different storage buffer formulation.



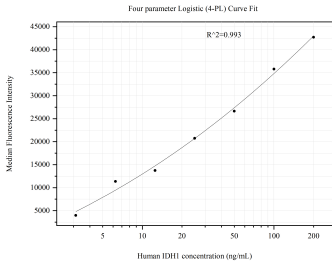
Immunofluorescent analysis of (-20°C Ethanol) fixed HepG2 cells using 66197-1-Ig (IDH1 antibody) at dilution of 1:400 and Alexa Fluor 488-Conjugated AffiniPure Goat Anti-Mouse IgG(H+L). This data was developed using the same antibody clone with 66197-1-PBS in a different storage buffer formulation.



Immunofluorescent analysis of (10% Formaldehyde) fixed HepG2 cells using 66197-1-Ig(IDH1 antibody) at dilution of 1:100 and Alexa Fluor 488-conjugated AffiniPure Goat Anti-Mouse IgG(H+L). This data was developed using the same antibody clone with 66197-1-PBS in a different storage buffer formulation.



1x10⁶ HepG2 cells were intracellularly stained with 0.25 ug IDH1 Monoclonal antibody (66197-1-Ig, Clone:2A6A2) and CoraLite®488-Conjugated AffiniPure Goat Anti-Mouse IgG(H+L) (SA00013-1)(red), or 0.25 ug Mouse IgG1 Isotype Control (MOPC-21) (65124-1-Ig, Clone: MOPC-21) (blue). Cells were fixed with 4% PFA and permeabilized with Flow Cytometry Perm Buffer (PF00011-C). This data was developed using the same antibody clone with 66197-1-PBS in a



Cytometric bead array standard curve of MP51184-1, IDH1 Monoclonal Matched Antibody Pair, PBS Only. Capture antibody: 66197-2-PBS. Detection antibody: 66197-1-PBS. Standard:Ag19293. Range: 3.125-200 ng/mL.