

For Research Use Only

MTA2 Monoclonal antibody

Catalog Number: 66195-1-Ig

Featured Product

6 Publications



Basic Information

Catalog Number:

66195-1-Ig

Size:

1000 µg/ml

Source:

Mouse

Isotype:

IgG2b

Immunogen Catalog Number:

AG11713

GenBank Accession Number:

BC053650

GeneID (NCBI):

9219

UNIPROT ID:

O94776

Full Name:

metastasis associated 1 family, member 2

Calculated MW:

668 aa, 75 kDa

Observed MW:

75 kDa

Purification Method:

Protein A purification

CloneNo.:

2G12G4

Recommended Dilutions:

WB 1:5000-1:50000

IHC 1:500-1:2000

IF 1:125-1:500

Applications

Tested Applications:

FC, IF/ICC, IHC, WB, ELISA

Cited Applications:

WB, IF

Species Specificity:

human, mouse, rat

Cited Species:

human

Note-IHC: suggested antigen retrieval with TE buffer pH 9.0; (*) Alternatively, antigen retrieval may be performed with citrate buffer pH 6.0

Positive Controls:

WB: SW480 cells, HeLa cells, HEK-293 cells, HepG2 cells, Jurkat cells, K-562 cells, HSC-T6 cells, NIH/3T3 cells, 4T1 cells

IHC: mouse brain tissue, human lung tissue, mouse lung tissue

IF: HepG2 cells,

Background Information

Metastasis-associated protein MTA2, also named as MTA1L1 or PID, is a 668 amino acid protein, which contains one BAH domain, one ELM2 domain, one GATA-type zinc finger and one SANT domain. MTA2 localizes in the nucleus and is widely expressed in many tissues. MTA2 may be involved in the regulation of gene expression as repressor and activator.

Notable Publications

Author	Pubmed ID	Journal	Application
Shanshan Li	33014158	Oncol Lett	WB
Yayuan Zheng	35884488	Cancers (Basel)	WB
Zhu Zeng	31410216	Theranostics	WB,IF

Storage

Storage:

Store at -20°C. Stable for one year after shipment.

Storage Buffer:

PBS with 0.02% sodium azide and 50% glycerol pH 7.3.

Aliquoting is unnecessary for -20°C storage

For technical support and original validation data for this product please contact:

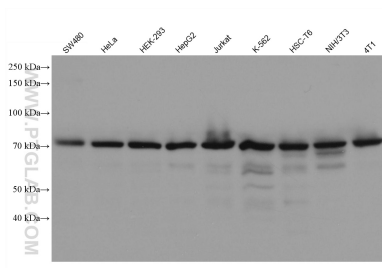
T: 4006900926

E: Proteintech-CN@ptglab.com

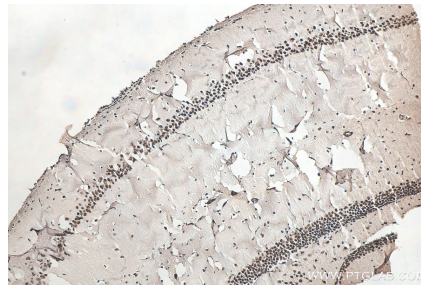
W: ptgcn.com

This product is exclusively available under Proteintech Group brand and is not available to purchase from any other manufacturer.

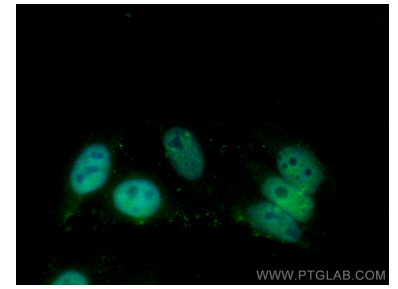
Selected Validation Data



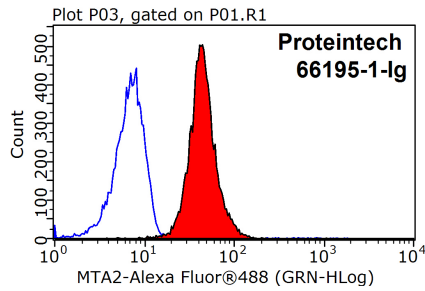
Various lysates were subjected to SDS PAGE followed by western blot with 66195-1-Ig (MTA2 antibody) at dilution of 1:10000 incubated at room temperature for 1.5 hours.



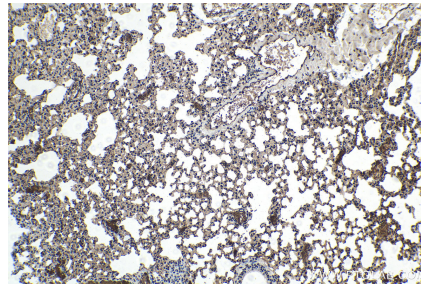
Immunohistochemical analysis of paraffin-embedded mouse brain tissue slide using 66195-1-Ig (MTA2 antibody) at dilution of 1:1000 (under 10x lens). Heat mediated antigen retrieval with Tris-EDTA buffer (pH 9.0).



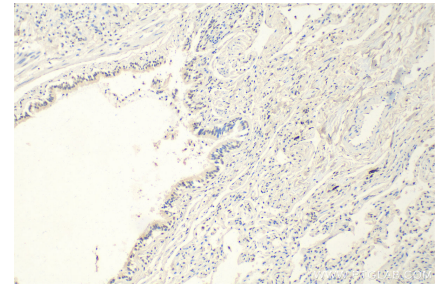
Immunofluorescent analysis of (4% PFA) fixed HepG2 cells using MTA2 antibody (66195-1-Ig, Clone: 2G12G4) at dilution of 1:250 and CoraLite®488-Conjugated AffiniPure Goat Anti-Mouse IgG(H+L).



1X10⁶ HepG2 cells were stained with .2ug MTA2 antibody (66195-1-Ig, red) and control antibody (blue). Fixed with 90% MeOH blocked with 3% BSA (30 min). Alexa Fluor 488-conjugated AffiniPure Goat Anti-Mouse IgG(H+L) with dilution 1:1000.



Immunohistochemical analysis of paraffin-embedded mouse lung tissue slide using 66195-1-Ig (MTA2 antibody) at dilution of 1:4000 (under 10x lens). Heat mediated antigen retrieval with Tris-EDTA buffer (pH 9.0).



Immunohistochemical analysis of paraffin-embedded human lung tissue slide using 66195-1-Ig (MTA2 antibody) at dilution of 1:2000 (under 10x lens). Heat mediated antigen retrieval with Tris-EDTA buffer (pH 9.0).