

# Fibrinogen Beta Chain Monoclonal antibody

Catalog Number: 66186-1-Ig **2 Publications**

## Basic Information

<b>Catalog Number:</b> 66186-1-Ig	<b>GenBank Accession Number:</b> BC107766	<b>Purification Method:</b> Protein A purification
<b>Size:</b> 2900 $\mu$ g/ml	<b>GeneID (NCBI):</b> 2244	<b>CloneNo.:</b> 1F8E4
<b>Source:</b> Mouse	<b>UNIPROT ID:</b> P02675	<b>Recommended Dilutions:</b> WB 1:500-1:2000
<b>Isotype:</b> IgG2b	<b>Full Name:</b> fibrinogen beta chain	
<b>Immunogen Catalog Number:</b> AG10205	<b>Calculated MW:</b> 491 aa, 56 kDa	
	<b>Observed MW:</b> 50 kDa	

## Applications

<b>Tested Applications:</b> WB, ELISA	<b>Positive Controls:</b> WB : human heart tissue, fetal human brain tissue
<b>Cited Applications:</b> WB	
<b>Species Specificity:</b> human	
<b>Cited Species:</b> human	

## Background Information

Fibrinogen is a soluble plasma glycoprotein synthesized in the liver. It is composed of two sets of three structurally different subunits: alpha (FGA), beta (FGB), gamma (FGG). Fibrinogen is converted by thrombin into fibrin during blood coagulation. Fibrinogen and fibrin play overlapping roles in blood clotting, fibrinolysis, cellular and matrix interactions, the inflammatory response, wound healing, and neoplasia (PMID: 16102057). FGB is the beta chain of fibrinogen. During conversion of fibrinogen to fibrin, fibrinopeptide B is cleaved from FGB by thrombin. Mutations in the gene of FGB lead to several disorders, including afibrinogenemia, dysfibrinogenemia, hypodysfibrinogenemia and thrombotic tendency.

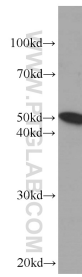
## Notable Publications

Author	Pubmed ID	Journal	Application
Yue Guan	33987362	Ann Transl Med	WB
Zhijian Huang	38704642	Int J Surg	

## Storage

**Storage:**  
Store at -20°C. Stable for one year after shipment.  
**Storage Buffer:**  
PBS with 0.02% sodium azide and 50% glycerol pH 7.3.  
Aliquoting is unnecessary for -20°C storage

## Selected Validation Data



human heart tissue were subjected to SDS PAGE followed by western blot with 66186-1-Ig (Fibrinogen beta chain antibody at dilution of 1:1000 incubated at room temperature for 1.5 hours.