

LBP Monoclonal antibody

Catalog Number: 66181-1-Ig 1 Publications

Basic Information

Catalog Number: 66181-1-Ig	GenBank Accession Number: BC022256	Purification Method: Protein A purification
Size: 1200 μ g/ml	GeneID (NCBI): 3929	CloneNo.: 3A7E3
Source: Mouse	UNIPROT ID: P18428	Recommended Dilutions: WB 1:500-1:2000 IHC 1:250-1:1000
Isotype: IgG2b	Full Name: lipopolysaccharide binding protein	
Immunogen Catalog Number: AG13485	Calculated MW: 481 aa, 53 kDa Observed MW: 60 kDa	

Applications

Tested Applications: IHC, WB, ELISA	Positive Controls: WB : Jurkat cells, IHC : human liver cancer tissue, human liver tissue, human kidney tissue
Cited Applications: WB, IF	
Species Specificity: human	
Cited Species: human, mouse	
Note-IHC: suggested antigen retrieval with TE buffer pH 9.0; (*) Alternatively, antigen retrieval may be performed with citrate buffer pH 6.0	

Background Information

LBP (lipopolysaccharide-binding protein) is an acute-phase protein, predominantly synthesized by hepatocytes. It is present in normal serum at concentrations of 5 to 10 μ g/ml, rising up to 200 μ g/ml 24 h after induction of an acute-phase response. LBP binds to the lipid A moiety of bacterial lipopolysaccharides (LPS), a glycolipid present in the outer membrane of all Gram-negative bacteria, and acts as an affinity enhancer for CD14, facilitating its association with LPS. (PMID: 9665271; 11598069)

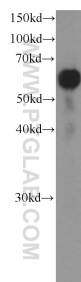
Notable Publications

Author	Pubmed ID	Journal	Application
Qilun Zhang	38615060	Nat Commun	WB,IF

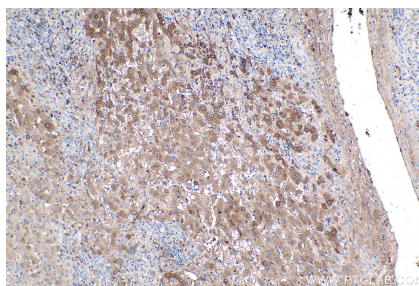
Storage

Storage:
Store at -20°C. Stable for one year after shipment.
Storage Buffer:
PBS with 0.02% sodium azide and 50% glycerol pH 7.3.
Aliquoting is unnecessary for -20°C storage

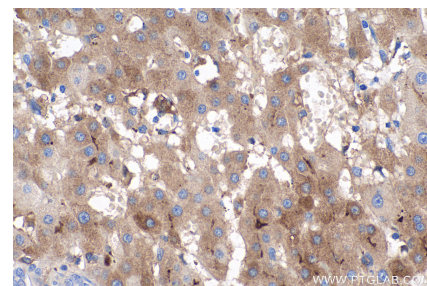
Selected Validation Data



Jurkat cells were subjected to SDS PAGE followed by western blot with 66181-1-Ig (LBP Antibody) at dilution of 1:1000 incubated at room temperature for 1.5 hours.



Immunohistochemical analysis of paraffin-embedded human liver cancer tissue slide using 66181-1-Ig (LBP antibody) at dilution of 1:500 (under 10x lens). Heat mediated antigen retrieval with Tris-EDTA buffer (pH 9.0).



Immunohistochemical analysis of paraffin-embedded human liver cancer tissue slide using 66181-1-Ig (LBP antibody) at dilution of 1:500 (under 40x lens). Heat mediated antigen retrieval with Tris-EDTA buffer (pH 9.0).