

For Research Use Only

MSH6 Monoclonal antibody, PBS Only (Capture)

Catalog Number: 66172-2-PBS



Basic Information

Catalog Number:	66172-2-PBS	GenBank Accession Number:	BC004246	Purification Method:	Protein G purification
Concentration:	1000 µg/ml	GeneID (NCBI):	2956	CloneNo.:	5B5A7
Source:	Mouse	UNIPROT ID:	P52701		
Isotype:	IgG1	Full Name:	mutS homolog 6 (E. coli)		
Immunogen Catalog Number:	AG12645	Calculated MW:	153 kDa		
		Observed MW:	150-160 kDa		

Applications

Tested Applications:
IHC, Cytometric bead array, Indirect ELISA

Species Specificity:
human

Background Information

MSH6, also named as DNA mismatch repair protein Msh6 or GTMBP, is a 1360 amino acid protein, which contains one PWWP domain and belongs to the DNA mismatch repair MutS family. MSH6 localizes in the nucleus and is a component of the post-replicative DNA mismatch repair system. Msh2 and Msh6 form a protein complex required to repair mismatches generated during DNA replication.

Storage

Storage:
Store at -80°C.
The product is shipped with ice packs. Upon receipt, store it immediately at -80°C

Storage Buffer:
PBS Only

For technical support and original validation data for this product please contact:

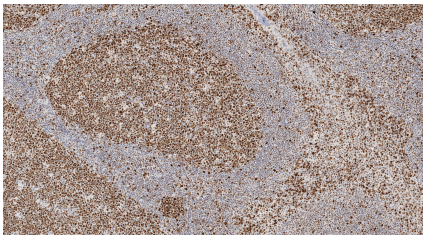
T: 4006900926

E: Proteintech-CN@ptglab.com

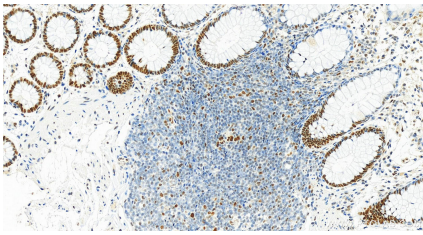
W: ptgcn.com

This product is exclusively available under Proteintech Group brand and is not available to purchase from any other manufacturer.

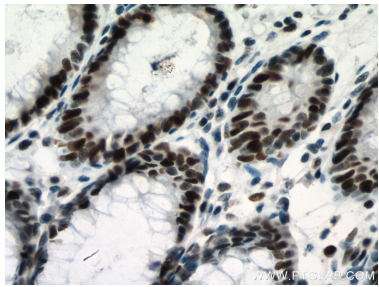
Selected Validation Data



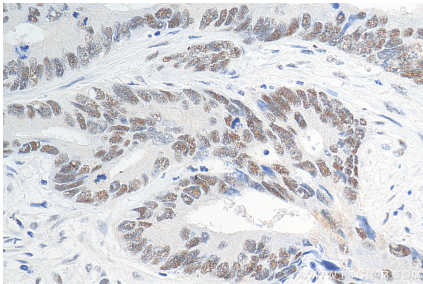
Immunohistochemical analysis of paraffin-embedded human tonsillitis tissue slide using 66172-2-Ig (MSH6 antibody) at dilution of 1:10000 (under 10x lens). Heat mediated antigen retrieval with Tris-EDTA buffer (pH 9.0). This data was developed using the same antibody clone with 66172-2-PBS in a different storage buffer formulation.



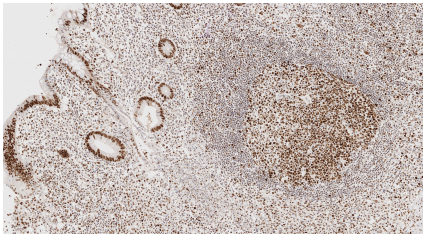
Immunohistochemical analysis of paraffin-embedded human normal colon slide using 66172-2-Ig (MSH6 antibody) at dilution of 1:4000 (under 20x lens). Heat mediated antigen retrieval with Tris-EDTA buffer (pH 9.0). This data was developed using the same antibody clone with 66172-2-PBS in a different storage buffer formulation.



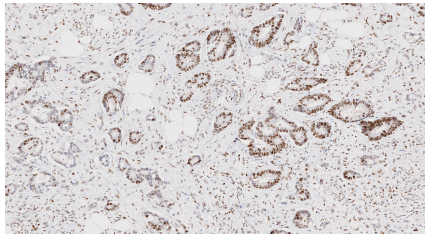
Immunohistochemical analysis of paraffin-embedded human colon cancer tissue slide using 66172-2-Ig (MSH6 antibody) at dilution of 1:2000 (under 40x lens). Heat mediated antigen retrieval with Tris-EDTA buffer (pH 9.0). This data was developed using the same antibody clone with 66172-2-PBS in a different storage buffer formulation.



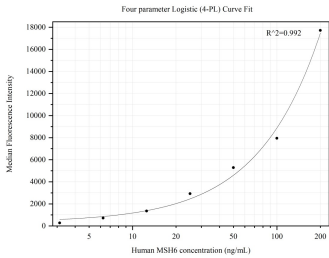
Immunohistochemical analysis of paraffin-embedded human colon cancer tissue slide using 66172-2-Ig (MSH6 antibody) at dilution of 1:2000 (under 40x lens). Heat mediated antigen retrieval with Tris-EDTA buffer (pH 9.0). This data was developed using the same antibody clone with 66172-2-PBS in a different storage buffer formulation.



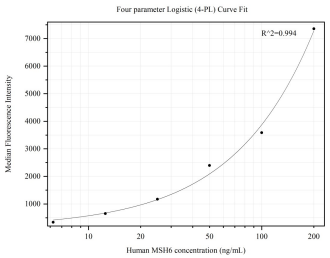
Immunohistochemical analysis of paraffin-embedded human appendicitis tissue slide using 66172-2-Ig (MSH6 antibody) at dilution of 1:10000 (under 10x lens). Heat mediated antigen retrieval with Tris-EDTA buffer (pH 9.0). This data was developed using the same antibody clone with 66172-2-PBS in a different storage buffer formulation.



Immunohistochemical analysis of paraffin-embedded human rectal cancer tissue slide using 66172-2-Ig (MSH6 antibody) at dilution of 1:10000 (under 10x lens). Heat mediated antigen retrieval with Tris-EDTA buffer (pH 9.0). This data was developed using the same antibody clone with 66172-2-PBS in a different storage buffer formulation.



Cytometric bead array standard curve of MP50291-1, MSH6 Monoclonal Matched Antibody Pair, PBS Only. Capture antibody: 66172-2-PBS. Detection antibody: 66172-3-PBS. Standard: Ag12645. Range: 3.125-200 ng/mL.



Cytometric bead array standard curve of MP50291-2, MSH6 Monoclonal Matched Antibody Pair, PBS Only. Capture antibody: 66172-2-PBS. Detection antibody: 66172-4-PBS. Standard: Ag12645. Range: 6.25-200 ng/mL.