

For Research Use Only

Transferrin/TF Monoclonal antibody

Catalog Number: 66171-1-Ig **7 Publications**



Basic Information

Catalog Number: 66171-1-Ig	GenBank Accession Number: BC059367	Purification Method: Protein G purification
Concentration: 1500 ug/ml	GeneID (NCBI): 7018	CloneNo.: 2B4C6
Source: Mouse	UNIPROT ID: P02787	Recommended Dilutions: WB: 1:5000-1:50000 IHC: 1:200-1:2000 IF-P: 1:200-1:800
Isotype: IgG1	Full Name: transferrin	
Immunogen Catalog Number: AG11668	Calculated MW: 698 aa, 77 kDa Observed MW: 77 kDa	

Applications

Tested Applications: WB, IHC, IF-P, ELISA	Positive Controls:
Cited Applications: WB	WB : human plasma, fetal human brain tissue
Species Specificity: human	IHC : human liver cancer tissue, human liver tissue
Cited Species: human	IF-P : human liver tissue, human placenta tissue
Note-IHC: suggested antigen retrieval with TE buffer pH 9.0; (*) Alternatively, antigen retrieval may be performed with citrate buffer pH 6.0	

Background Information

Transferrin(TF) is also named as Beta-1 metal-binding globulin, Siderophilin and belongs to the transferrin family. It is a bilobal iron-binding protein that plays the crucial role of binding ferric iron and keeping it in solution, thereby controlling the levels of this important metal. Serum transferrin may have a further role in stimulating cell proliferation.

Notable Publications

Author	Pubmed ID	Journal	Application
Z. YAN	34787870	Eur Rev Med Pharmacol Sci	WB
Yichun Zou	30579855	Neurochem Int	WB
Sinan Jin	40270615	Front Oncol	WB

Storage

Storage:
Store at -20°C. Stable for one year after shipment.
Storage Buffer:
PBS with 0.02% sodium azide and 50% glycerol, pH7.3
Aliquoting is unnecessary for -20°C storage

For technical support and original validation data for this product please contact:

T: 4006900926

E: Proteintech-CN@ptglab.com

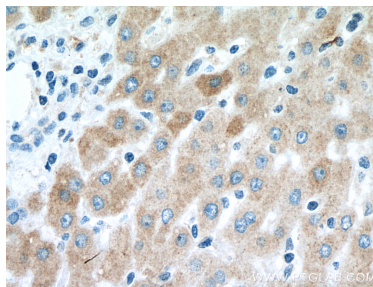
W: ptgcn.com

This product is exclusively available under Proteintech Group brand and is not available to purchase from any other manufacturer.

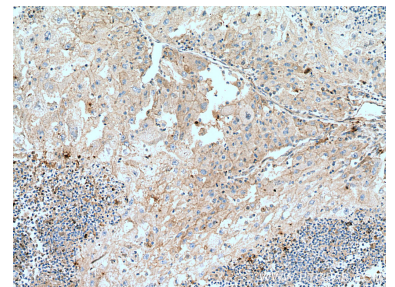
Selected Validation Data



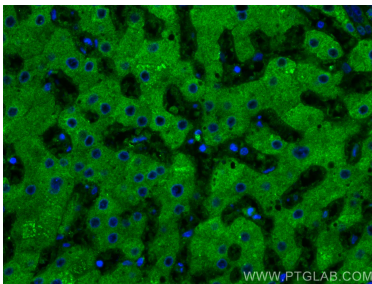
human plasma were subjected to SDS PAGE followed by western blot with 66171-1-Ig (Transferrin antibody) at dilution of 1:10000 incubated at room temperature for 1.5 hours.



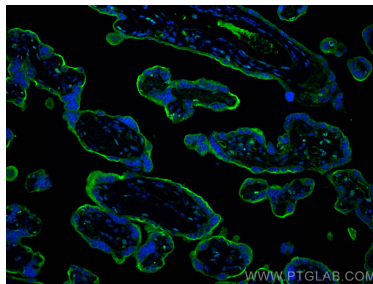
Immunohistochemical analysis of paraffin-embedded human liver cancer tissue slide using 66171-1-Ig (Transferrin antibody) at dilution of 1:2000 (under 40x lens). Heat mediated antigen retrieval with Tris-EDTA buffer (pH 9.0).



Immunohistochemical analysis of paraffin-embedded human liver cancer tissue slide using 66171-1-Ig (Transferrin antibody) at dilution of 1:2000 (under 10x lens). Heat mediated antigen retrieval with Tris-EDTA buffer (pH 9.0).



Immunofluorescent analysis of (4% PFA) fixed human liver tissue using Transferrin antibody (66171-1-Ig, Clone: 2B4C6) at dilution of 1:400 and CoraLite®488-Conjugated AffiniPure Goat Anti-Mouse IgG(H+L).



Immunofluorescent analysis of (4% PFA) fixed paraffin-embedded human placenta tissue using Transferrin antibody (66171-1-Ig, Clone: 2B4C6) at dilution of 1:400 and CoraLite®488-Conjugated AffiniPure Goat Anti-Mouse IgG(H+L) (SA00013-1). Heat mediated antigen retrieval with Tris-EDTA buffer (pH 9.0).