

Claudin 18 Monoclonal antibody, PBS Only

Catalog Number: 66167-1-PBS

Basic Information

Catalog Number:

66167-1-PBS

Size:

1mg/ml

Source:

Mouse

Isotype:

IgG2a

Immunogen Catalog Number:

AG15517

GenBank Accession Number:

BC146668

GeneID (NCBI):

51208

UNIPROT ID:

P56856

Full Name:

claudin 18

Calculated MW:

261 aa, 28 kDa

Observed MW:

29 kDa

Purification Method:

Protein A purification

CloneNo.:

5G7F2

Applications

Tested Applications:

IHC, IP, Indirect ELISA

Species Specificity:

human, mouse

Background Information

Claudin 18 (CLDN18) belongs to the large claudin family of proteins, which are tetraspan transmembrane proteins of tight junctions (PMID: 11585919; 18036336). Claudins exhibit specific patterns of expression in different tissues (PMID: 15447685). CLDN18 is specifically expressed in the stomach and lung. CLDN18 has two alternatively spliced variants, CLDN18.1 and CLDN18.2. CLDN18.2 is a highly selective gastric lineage marker that determines the gastric phenotype in a neoplastic condition, whereas CLDN18.1 is lung specific (PMID: 11585919; 21832145). Altered CLDN18 expression has been reported in various human malignancies, including gastric cancer, lung adenocarcinoma, and pancreatic neoplasm (PMID: 17459057; 22076167; 21832145). This antibody can recognize both CLDN18.1 and CLDN18.2.

Storage

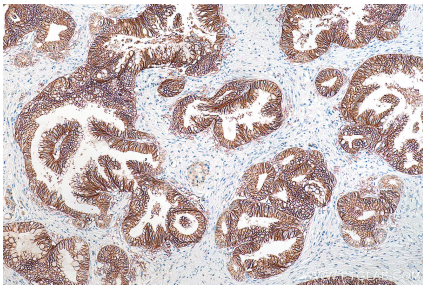
Storage:

Store at -80°C.

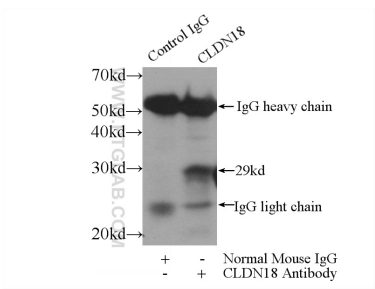
The product is shipped with ice packs. Upon receipt, store it immediately at -80°C**Storage Buffer:**

PBS Only

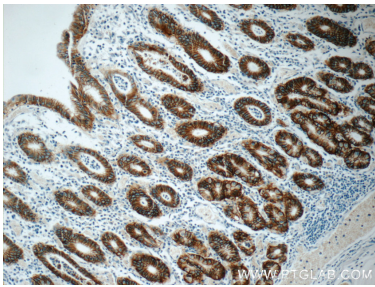
Selected Validation Data



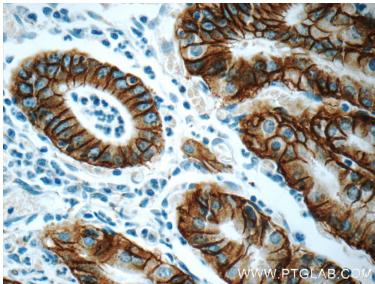
Immunohistochemical analysis of paraffin-embedded human pancreas cancer tissue slide using 66167-1-Ig (Claudin 18 antibody) at dilution of 1:1000 (under 10x lens). Heat mediated antigen retrieval with Tris-EDTA buffer (pH 9.0). This data was developed using the same antibody clone with 66167-1-PBS in a different storage buffer formulation.



IP result of anti-Claudin 18 (IP:66167-1-Ig, 3ug; Detection:66167-1-Ig 1:300) with mouse stomach tissue lysate 4000ug. This data was developed using the same antibody clone with 66167-1-PBS in a different storage buffer formulation.



Immunohistochemical analysis of paraffin-embedded human stomach tissue slide using 66167-1-Ig (Claudin 18 antibody at dilution of 1:1000). This data was developed using the same antibody clone with 66167-1-PBS in a different storage buffer formulation.



Immunohistochemical analysis of paraffin-embedded human stomach tissue slide using 66167-1-Ig (Claudin 18 antibody at dilution of 1:1000). This data was developed using the same antibody clone with 66167-1-PBS in a different storage buffer formulation.