

For Research Use Only

ANP32B Monoclonal antibody, PBS Only (Capture/Detector)

Catalog Number: 66160-3-PBS



Basic Information

Catalog Number:

66160-3-PBS

Concentration:

1000 μ g/ml

Source:

Mouse

Isotype:

IgG1

Immunogen Catalog Number:

AG1274

GenBank Accession Number:

BC013003

GeneID (NCBI):

10541

UNIPROT ID:

Q92688

Full Name:

acidic (leucine-rich) nuclear
phosphoprotein 32 family, member B

Calculated MW:

29 kDa

Purification Method:

Protein G purification

CloneNo.:

1H3E5

Applications

Tested Applications:

Cytometric bead array, Sandwich ELISA, Indirect ELISA,
Sample test

Species Specificity:

human

Background Information

Storage

Storage:

Store at -80°C.

The product is shipped with ice packs. Upon receipt, store it immediately at -80°C

Storage Buffer:

PBS Only

For technical support and original validation data for this product please contact:

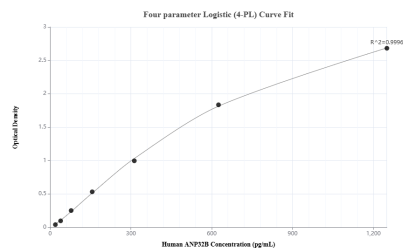
T: 4006900926

E: Proteintech-CN@ptglab.com

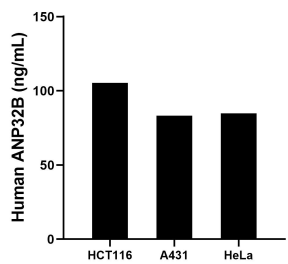
W: ptgcn.com

This product is exclusively available under Proteintech Group brand and is not available to purchase from any other manufacturer.

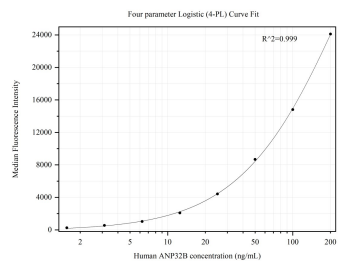
Selected Validation Data



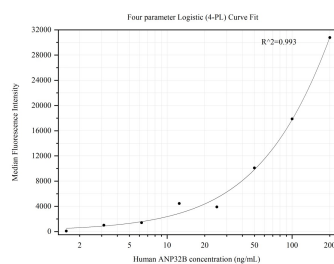
Sandwich ELISA standard curve of MP50363-3, Human ANP32B Monoclonal Matched Antibody Pair - PBS only. 66160-3-PBS was coated to a plate as the capture antibody and incubated with serial dilutions of standard Ag1274. 66160-2-PBS was HRP conjugated as the detection antibody. Range: 19.5-1250 pg/mL



The mean ANP32B concentration was determined to be 105.34 ng/mL in HCT116 cell extract based on a 2.0 mg/mL extract load, 83.16 ng/mL in A431 cell extract based on a 1.3 mg/mL extract load and 84.78 ng/mL in HeLa cell extract based on a 1.5 mg/mL extract load.



Cytometric bead array standard curve of MP50363-2, ANP32B Monoclonal Matched Antibody Pair, PBS Only. Capture antibody: 66160-1-PBS. Detection antibody: 66160-3-PBS. Standard:Ag1274. Range: 1.563-200 ng/mL



Cytometric bead array standard curve of MP50363-3, ANP32B Monoclonal Matched Antibody Pair, PBS Only. Capture antibody: 66160-3-PBS. Detection antibody: 66160-2-PBS. Standard:Ag1274. Range: 1.563-200 ng/mL