

For Research Use Only

Fibrinogen Gamma Chain Monoclonal antibody



Catalog Number: 66158-1-Ig **2 Publications**

Basic Information

Catalog Number: 66158-1-Ig	GenBank Accession Number: BC007044	Purification Method: Protein A purification
Size: 1200 µg/ml	GeneID (NCBI): 2266	CloneNo.: 2B2B8
Source: Mouse	UNIPROT ID: P02679	Recommended Dilutions: WB 1:5000-1:50000 IHC 1:20-1:200 IF 1:20-1:200
Isotype: IgM	Full Name: fibrinogen gamma chain	
Immunogen Catalog Number: AG8817	Calculated MW: 453aa,52 kDa; 437aa,50 kDa	
	Observed MW: 52 kDa	

Applications

Tested Applications: IF/ICC, IHC, WB, ELISA	Positive Controls: WB : human peripheral blood leukocyte, L02 cells, human peripheral blood platelets IHC : human liver tissue, human kidney tissue IF : L02 cells,
Cited Applications: IHC	
Species Specificity: human	
Cited Species: human	
Note-IHC: suggested antigen retrieval with TE buffer pH 9.0; (*) Alternatively, antigen retrieval may be performed with citrate buffer pH 6.0	

Background Information

Fibrinogen is a soluble plasma glycoprotein synthesized in the liver. It is composed of two sets of three structurally different subunits: alpha (FGA), beta (FGB), gamma (FGG). Fibrinogen is converted by thrombin into fibrin during blood coagulation. Fibrinogen and fibrin play overlapping roles in blood clotting, fibrinolysis, cellular and matrix interactions, the inflammatory response, wound healing, and neoplasia (PMID: 16102057). FGG is the gamma chain of fibrinogen. Mutations in the gene of FGG lead to several disorders, including dysfibrinogenemia, hypofibrinogenemia and thrombophilia.

Notable Publications

Author	Pubmed ID	Journal	Application
Fanfan Li	30959404	Mol Ther Nucleic Acids	
H H Peng	33995485	Front Genet	IHC

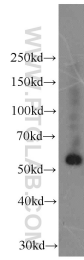
Storage

Storage:
Store at -20°C. Stable for one year after shipment.
Storage Buffer:
PBS with 0.02% sodium azide and 50% glycerol pH 7.3.
Aliquoting is unnecessary for -20°C storage

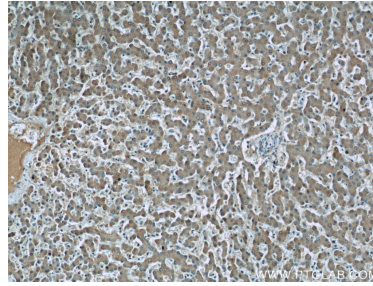
For technical support and original validation data for this product please contact:
T: 4006900926 E: Proteintech-CN@ptglab.com W: ptgcn.com

This product is exclusively available under Proteintech Group brand and is not available to purchase from any other manufacturer.

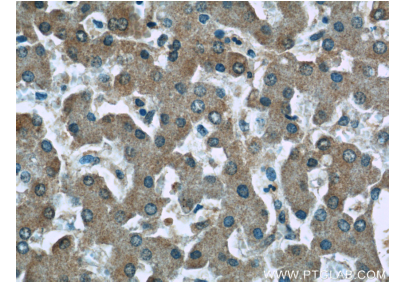
Selected Validation Data



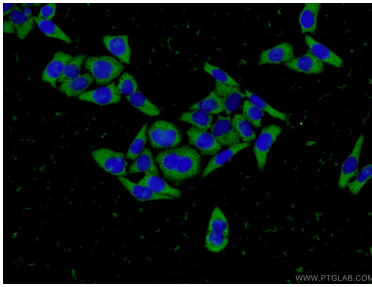
L02 cells were subjected to SDS PAGE followed by western blot with 66158-1-Ig (Fibrinogen gamma chain antibody at dilution of 1:1000 incubated at room temperature for 1.5 hours.



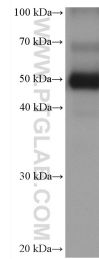
Immunohistochemical analysis of paraffin-embedded human liver tissue slide using 66158-1-Ig (Fibrinogen gamma chain antibody at dilution of 1:50 (under 10x lens).



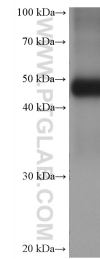
Immunohistochemical analysis of paraffin-embedded human liver tissue slide using 66158-1-Ig (Fibrinogen gamma chain antibody at dilution of 1:50 (under 40x lens).



Immunofluorescent analysis of L02 cells using 66158-1-Ig (Fibrinogen gamma chain antibody) at dilution of 1:50 and Alexa Fluor 488-conjugated AffiniPure Goat Anti-Mouse IgG (H+L).



human peripheral blood leukocyte were subjected to SDS PAGE followed by western blot with 66158-1-Ig (Fibrinogen Gamma Chain antibody) at dilution of 1:10000 incubated at room temperature for 1.5 hours.



human peripheral blood platelets were subjected to SDS PAGE followed by western blot with 66158-1-Ig (Fibrinogen Gamma Chain antibody) at dilution of 1:10000 incubated at room temperature for 1.5 hours.