

For Research Use Only

C3/C3b/C3c Monoclonal antibody

Catalog Number: 66157-1-Ig **3 Publications**



Basic Information

Catalog Number: 66157-1-Ig	GenBank Accession Number: BC150179	Purification Method: Protein G purification
Size: 1000 ug/ml	GeneID (NCBI): 718	CloneNo.: 2A6B3
Source: Mouse	UNIPROT ID: P01024	Recommended Dilutions: WB 1:1000-1:8000 IHC 1:20-1:200 IF/ICC 1:50-1:500
Isotype: IgG1	Full Name: complement component 3	
Immunogen Catalog Number: AG15955	Calculated MW: 1663 aa, 187 kDa Observed MW: 115 kDa	

Applications

Tested Applications: WB, IHC, IF/ICC, ELISA	Positive Controls: WB : HUVEC cells, human blood, human plasma, HepG2 cells, J774A.1 cells, RAW 264.7 cells IHC : human liver tissue, IF/ICC : HepG2 cells,
Cited Applications: WB, IF, ELISA	
Species Specificity: human, mouse	
Cited Species: mouse, rat	
Note-IHC: suggested antigen retrieval with TE buffer pH 9.0; (*) Alternatively, antigen retrieval may be performed with citrate buffer pH 6.0	

Background Information

The complement system is an important effector that bridges the innate and adaptive immune systems (PMID: 20010915). The third component of complement, C3, plays a central role in the activation of the complement system. Its processing by C3 convertase is the central reaction in both classical and alternative complement pathways (PMID: 11414361). Human C3, composed of α and β chains (115 and 75 kDa, respectively), is cleaved into C3a and C3b by C3 convertase. C3b is further cleaved into iC3b, C3c, C3dg and C3f. This antibody raised against 1314-1663 aa of human C3 protein recognizes the C3 alpha chain, C3b alpha' chain, and C3c alpha' chain fragment 2.

Notable Publications

Author	Pubmed ID	Journal	Application
Qing Liu	35725619	J Neuroinflammation	WB,IF
Yichun Zou	30579855	Neurochem Int	WB
Jiajia Xu	38251716	Virulence	WB,ELISA

Storage

Storage:
Store at -20°C. Stable for one year after shipment.
Storage Buffer:
PBS with 0.02% sodium azide and 50% glycerol pH 7.3.
Aliquoting is unnecessary for -20°C storage

For technical support and original validation data for this product please contact:

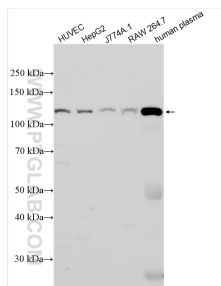
T: 4006900926

E: Proteintech-CN@ptglab.com

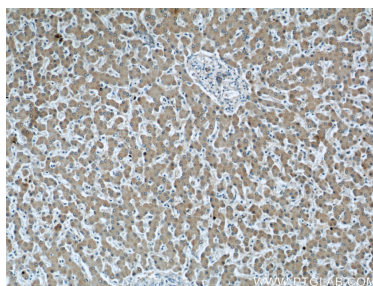
W: ptgcn.com

This product is exclusively available under Proteintech Group brand and is not available to purchase from any other manufacturer.

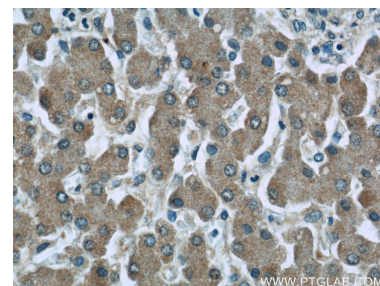
Selected Validation Data



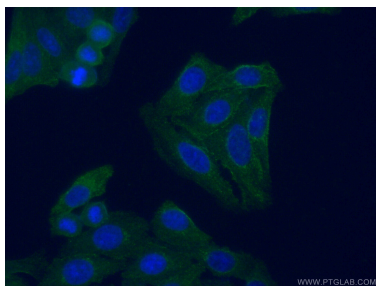
Various lysates were subjected to SDS PAGE followed by western blot with 66157-1-Ig (C3/C3b/C3c antibody) at dilution of 1:4000 incubated at room temperature for 1.5 hours.



Immunohistochemical analysis of paraffin-embedded human liver tissue slide using 66157-1-Ig (C3/C3b/C3c antibody) at dilution of 1:50 (under 10x lens).



Immunohistochemical analysis of paraffin-embedded human liver tissue slide using 66157-1-Ig (C3/C3b/C3c antibody) at dilution of 1:50 (under 40x lens).



Immunofluorescent analysis of (-20°C Ethanol) fixed HepG2 cells using 66157-1-Ig (C3/C3b/C3c antibody) at dilution of 1:100 and Alexa Fluor 488-Conjugated AffiniPure Goat Anti-Mouse IgG(H+L).