

For Research Use Only

# IL-16 Monoclonal antibody, PBS Only (Capture)

Catalog Number: 66145-1-PBS



## Basic Information

Catalog Number: 66145-1-PBS	GenBank Accession Number: BC040272	Purification Method: Protein A purification
Size: 1mg/ml	GeneID (NCBI): 3603	CloneNo.: 1C4C7
Source: Mouse	UNIPROT ID: Q14005	
Isotype: IgG2b	Full Name: interleukin 16 (lymphocyte chemoattractant factor)	
Immunogen Catalog Number: AG16466	Calculated MW: 130 aa, 15 kDa	
	Observed MW: 37 kDa	

## Applications

**Tested Applications:**  
WB, Cytometric bead array, Indirect ELISA

**Species Specificity:**  
human

## Background Information

IL-16 is a pleiotropic cytokine that functions as a chemoattractant, a modulator of T cell activation, and an inhibitor of HIV replication. It is mainly produced by T lymphocytes but also by other immune cells, neuronal cells, fibroblasts and epithelial cells. The signaling process of this cytokine is mediated by CD4. IL-16 induces chemotaxis of CD4+ cells such as lymphocytes, eosinophils, and dendritic cells by ligating CD4 directly at a site distinct from other ligands. Among its multiple functions, IL-16 is a T cell chemoattractant involved in T helper cell inflammatory responses and the regulation of both T cell growth, and responsiveness to regulatory cytokines. The cytokine function is exclusively attributed to the secreted C-terminal peptide, while the N-terminal product may play a role in cell cycle control.

## Storage

**Storage:**  
Store at -80°C.  
**The product is shipped with ice packs. Upon receipt, store it immediately at -80°C**

**Storage Buffer:**  
PBS Only

For technical support and original validation data for this product please contact:

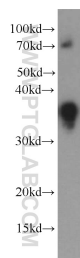
T: 4006900926

E: [Proteintech-CN@ptglab.com](mailto:Proteintech-CN@ptglab.com)

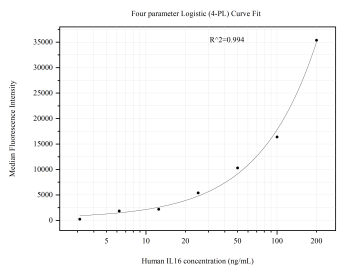
W: [ptgcn.com](http://ptgcn.com)

**This product is exclusively available under Proteintech Group brand and is not available to purchase from any other manufacturer.**

## Selected Validation Data



Recombinant protein were subjected to SDS PAGE followed by western blot with 66145-1-Ig (IL-16 antibody) at dilution of 1:20000 incubated at room temperature for 1.5 hours. This data was developed using the same antibody clone with 66145-1-PBS in a different storage buffer formulation.



Cytometric bead array standard curve of MP51113-1, IL-16 Monoclonal Matched Antibody Pair, PBS Only. Capture antibody: 66145-1-PBS. Detection antibody: 66145-2-PBS. Standard: Ag16466. Range: 3.125-200 ng/mL.