

IL-16 Monoclonal antibody

Catalog Number: 66145-1-Ig

Basic Information

Catalog Number:

66145-1-Ig

Size:

2600 µg/ml

Source:

Mouse

Isotype:

IgG2b

Immunogen Catalog Number:

AG16466

GenBank Accession Number:

BC040272

GeneID (NCBI):

3603

UNIPROT ID:

Q14005

Full Name:

interleukin 16 (lymphocyte
chemoattractant factor)

Calculated MW:

130 aa, 15 kDa

Observed MW:

37 kDa

Purification Method:

Protein A purification

CloneNo.:

1C4C7

Recommended Dilutions:

WB 1:5000-1:50000

Applications

Tested Applications:

WB, ELISA

Species Specificity:

human

Positive Controls:

WB: Recombinant protein,

Background Information

IL-16 is a pleiotropic cytokine that functions as a chemoattractant, a modulator of T cell activation, and an inhibitor of HIV replication. It is mainly produced by T lymphocytes but also by other immune cells, neuronal cells, fibroblasts and epithelial cells. The signaling process of this cytokine is mediated by CD4. IL-16 induces chemotaxis of CD4⁺ cells such as lymphocytes, eosinophils, and dendritic cells by ligating CD4 directly at a site distinct from other ligands. Among its multiple functions, IL-16 is a T cell chemoattractant involved in T helper cell inflammatory responses and the regulation of both T cell growth, and responsiveness to regulatory cytokines. The cytokine function is exclusively attributed to the secreted C-terminal peptide, while the N-terminal product may play a role in cell cycle control.

Storage

Storage:

Store at -20°C. Stable for one year after shipment.

Storage Buffer:

PBS with 0.02% sodium azide and 50% glycerol pH 7.3.

Aliquoting is unnecessary for -20°C storage

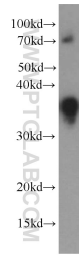
For technical support and original validation data for this product please contact:

T: 4006900926

E: Proteintech-CN@ptglab.comW: ptgcn.com

This product is exclusively available under Proteintech Group brand and is not available to purchase from any other manufacturer.

Selected Validation Data



Recombinant protein were subjected to SDS PAGE followed by western blot with 66145-1-Ig (IL-16 antibody) at dilution of 1:20000 incubated at room temperature for 1.5 hours.