

For Research Use Only

# Alpha-1-Antitrypsin Monoclonal antibody, PBS Only

Catalog Number: 66135-1-PBS

Featured Product



## Basic Information

Catalog Number:

66135-1-PBS

Size:

1mg/ml

Source:

Mouse

Isotype:

IgG1

Immunogen Catalog Number:

AG9516

GenBank Accession Number:

BC015642

GeneID (NCBI):

5265

UNIPROT ID:

P01009

Full Name:

serpin peptidase inhibitor, clade A  
(alpha-1 antiproteinase, antitrypsin),  
member 1

Calculated MW:

418 aa, 47 kDa

Observed MW:

51 kDa

Purification Method:

Protein A purification

CloneNo.:

1A9G6

## Applications

Tested Applications:

WB, IHC, IF/ICC, FC (Intra), IP, ELISA

Species Specificity:

human, mouse, rat, pig

## Background Information

SERPINA1 is the gene for a protein called alpha-1-antitrypsin (AAT), which is a serine protease inhibitor whose targets include elastase, plasmin, thrombin, trypsin, chymotrypsin, and plasminogen activator. AAT is a glycoprotein synthesized primarily by hepatocytes, with smaller amounts synthesized by intestinal epithelial cells, neutrophils, pulmonary alveolar cells and macrophages. AAT is the most abundant, endogenous serine protease inhibitor in blood circulation and it has been implicated in regulating vital fluid phase biological events such as blood coagulation, fibrinolysis, complement activation, apoptosis, reproduction, tumor progression and inflammatory response. The primary function of AAT is thought to be the inactivation of neutrophil elastase and other endogenous serine proteases. Defects in SERPINA1 can cause emphysema or liver disease.

## Storage

Storage:

Store at -80°C.

The product is shipped with ice packs. Upon receipt, store it immediately at -80°C

Storage Buffer:

PBS Only

For technical support and original validation data for this product please contact:

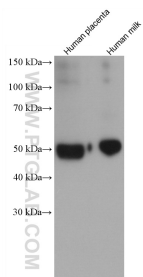
T: 4006900926

E: [Proteintech-CN@ptglab.com](mailto:Proteintech-CN@ptglab.com)

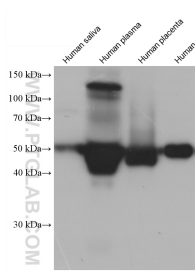
W: [ptgcn.com](http://ptgcn.com)

This product is exclusively available under Proteintech Group brand and is not available to purchase from any other manufacturer.

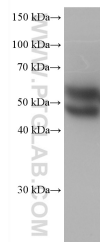
Selected Validation Data



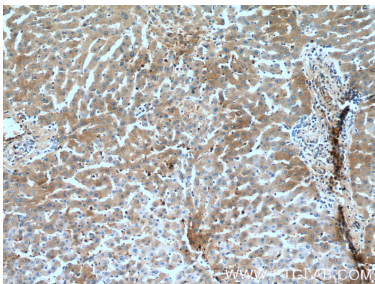
Various lysates were subjected to SDS PAGE followed by western blot with 66135-1-Ig (Alpha 1 Antitrypsin antibody) at dilution of 1:20000 incubated at room temperature for 1.5 hours. This data was developed using the same antibody clone with 66135-1-PBS in a different storage buffer formulation.



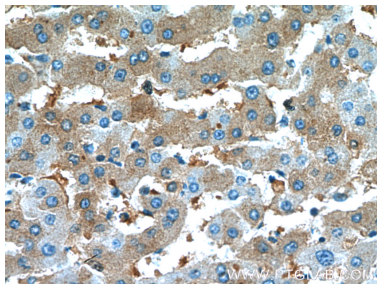
Various lysates were subjected to SDS PAGE followed by western blot with 66135-1-Ig (Alpha 1 Antitrypsin antibody) at dilution of 1:10000 incubated at room temperature for 1.5 hours. This data was developed using the same antibody clone with 66135-1-PBS in a different storage buffer formulation.



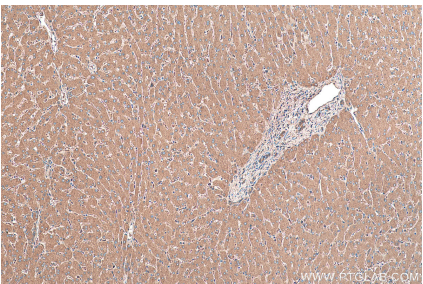
HepG2 cells were subjected to SDS PAGE followed by western blot with 66135-1-Ig (Alpha 1 Antitrypsin antibody) at dilution of 1:10000 incubated at room temperature for 1.5 hours. This data was developed using the same antibody clone with 66135-1-PBS in a different storage buffer formulation.



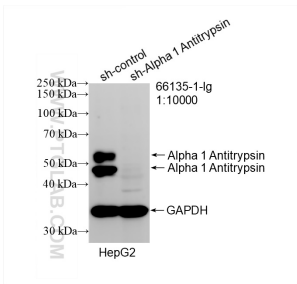
Immunohistochemical analysis of paraffin-embedded human liver tissue slide using 66135-1-Ig (Alpha-1-Antitrypsin Antibody) at dilution of 1:1000 (under 10x lens). This data was developed using the same antibody clone with 66135-1-PBS in a different storage buffer formulation.



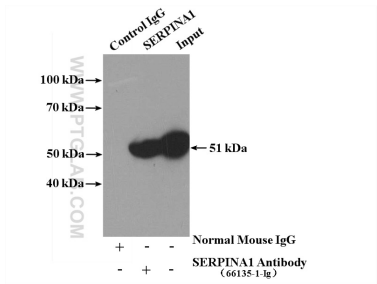
Immunohistochemical analysis of paraffin-embedded human liver tissue slide using 66135-1-Ig (Alpha-1-Antitrypsin Antibody) at dilution of 1:1000 (under 40x lens). This data was developed using the same antibody clone with 66135-1-PBS in a different storage buffer formulation.



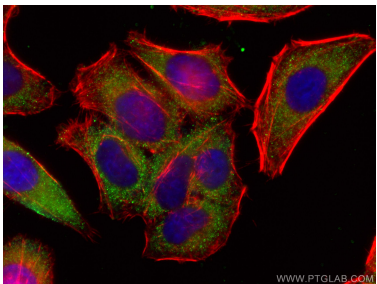
Immunohistochemical analysis of paraffin-embedded human liver tissue slide using 66135-1-Ig (Alpha 1 Antitrypsin antibody) at dilution of 1:64000 (under 10x lens). Heat mediated antigen retrieval with Tris-EDTA buffer (pH 9.0). This data was developed using the same antibody clone with 66135-1-PBS in a different storage buffer formulation.



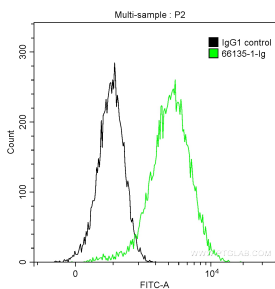
WB result of Alpha 1 Antitrypsin antibody (66135-1-Ig; 1:10000; incubated at room temperature for 1.5 hours) with sh-Control and sh-Alpha 1 Antitrypsin transfected HepG2 cells. This data was developed using the same antibody clone with 66135-1-PBS in a different storage buffer formulation.



IP result of anti-Alpha 1 Antitrypsin (IP:66135-1-Ig, 5ug; Detection:66135-1-Ig 1:1000) with human plasma lysate 4000ug. This data was developed using the same antibody clone with 66135-1-PBS in a different storage buffer formulation.



Immunofluorescent analysis of (-20°C Ethanol) fixed HepG2 cells using Alpha 1 Antitrypsin antibody (66135-1-Ig, Clone: 1A9G6) at dilution of 1:200 and CoraLite®488-Conjugated AffiniPure Goat Anti-Mouse IgG(H+L), CL594-phalloidin (red). This data was developed using the same antibody clone with 66135-1-PBS in a different storage buffer formulation.



1X10<sup>6</sup> HepG2 cells were intracellularly stained with 0.2 ug Anti-Human Alpha 1 Antitrypsin (66135-1-Ig, Clone:1A9G6) and CoraLite®488-Conjugated AffiniPure Goat Anti-Mouse IgG(H+L) at dilution 1:1000 (green), and 0.2 ug Mouse IgG1 Isotype Control (66360-1-Ig, Clone: T1F8D3F10) (black). Cells were fixed with 4% PFA and permeabilized with 0.1% TritonX-100. This data was developed using the same antibody clone with 66135-1-PBS in a different storage

