

For Research Use Only

# RBPJ Monoclonal antibody

Catalog Number: 66132-1-Ig **Featured Product**



## Basic Information

**Catalog Number:**

66132-1-Ig

**Size:**

900 µg/ml

**Source:**

Mouse

**Isotype:**

IgG1

**Immunogen Catalog Number:**

AG6302

**GenBank Accession Number:**

BC064976

**GeneID (NCBI):**

3516

**UNIPROT ID:**

Q06330

**Full Name:**

recombination signal binding protein for immunoglobulin kappa J region

**Calculated MW:**

56 kDa

**Observed MW:**

60 kDa

**Purification Method:**

Protein G purification

**CloneNo.:**

2F12G12

**Recommended Dilutions:**

WB 1:500-1:2000

## Applications

**Tested Applications:**

WB, ELISA

**Species Specificity:**

human

**Positive Controls:**

WB : HepG2 cells, human brain tissue, HeLa cells

## Background Information

### Storage

**Storage:**

Store at -20°C. Stable for one year after shipment.

**Storage Buffer:**

PBS with 0.02% sodium azide and 50% glycerol pH 7.3.

Aliquoting is unnecessary for -20°C storage

For technical support and original validation data for this product please contact:

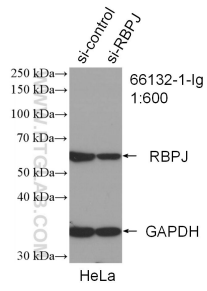
T: 4006900926

E: [Proteintech-CN@ptglab.com](mailto:Proteintech-CN@ptglab.com)

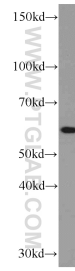
W: [ptgcn.com](http://ptgcn.com)

**This product is exclusively available under Proteintech Group brand and is not available to purchase from any other manufacturer.**

## Selected Validation Data



WB result of RBPJ antibody (66132-1-Ig; 1:600; incubated at room temperature for 1.5 hours) with sh-Control and sh-RBPJ transfected HeLa cells.



HepG2 cells were subjected to SDS PAGE followed by western blot with 66132-1-Ig (RBPJ antibody) at dilution of 1:1000 incubated at room temperature for 1.5 hours.