

For Research Use Only

# Kininogen 1 Monoclonal antibody, PBS Only



Catalog Number: 66123-1-PBS

## Basic Information

Catalog Number: 66123-1-PBS	GenBank Accession Number: BC060039	Purification Method: Protein G purification
Size: 1 mg/ml	GeneID (NCBI): 3827	CloneNo.: 10E8D11
Source: Mouse	UNIPROT ID: P01042	
Isotype: IgG1	Full Name: kininogen 1	
Immunogen Catalog Number: AG19233	Calculated MW: 644 aa, 72 kDa	
	Observed MW: 68 kDa	

## Applications

Tested Applications:  
WB, Indirect ELISA, IHC, IF

Species Specificity:  
human

## Background Information

Kininogens are inhibitors of thiol proteases. Kininogen 1 plays important role in Kinin-kallikrein system. This gene is translated into High-molecular weight kininogen (HMWK) and low-molecular weight kininogen (LMWK) after alternative splicing. HMWK is produced by the liver together with prekallikrein. It acts mainly as a cofactor on coagulation and inflammation, and has no intrinsic catalytic activity. LMWK is produced locally by numerous tissues, and secreted together with tissue kallikrein.

## Storage

Storage:  
Store at -80°C.

The product is shipped with ice packs. Upon receipt, store it immediately at -80°C

Storage Buffer:  
PBS Only

For technical support and original validation data for this product please contact:

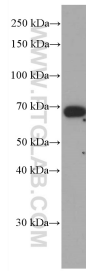
T: 4006900926

E: [Proteintech-CN@ptglab.com](mailto:Proteintech-CN@ptglab.com)

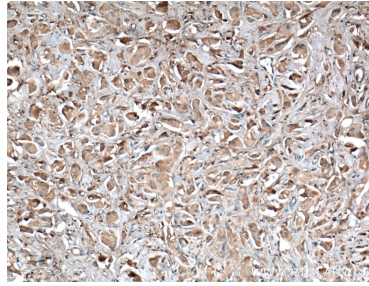
W: [ptgcn.com](http://ptgcn.com)

This product is exclusively available under Proteintech Group brand and is not available to purchase from any other manufacturer.

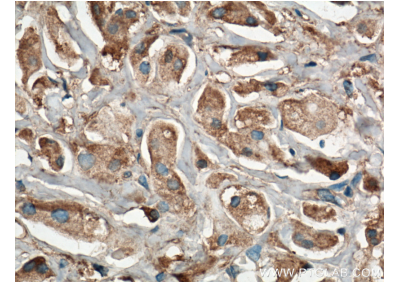
## Selected Validation Data



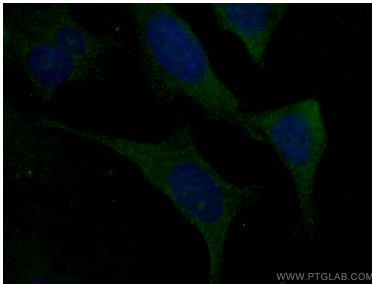
human heart tissue were subjected to SDS PAGE followed by western blot with 66123-1-Ig (Kininogen 1 antibody) at dilution of 1:10000 incubated at room temperature for 1.5 hours. This data was developed using the same antibody clone with 66123-1-PBS in a different storage buffer formulation.



Immunohistochemical analysis of paraffin-embedded human breast cancer tissue slide using 66123-1-Ig (Kininogen 1 antibody) at dilution of 1:200 (under 10x lens. Heat mediated antigen retrieval with Tris-EDTA buffer (pH 9.0). This data was developed using the same antibody clone with 66123-1-PBS in a different storage buffer formulation.



Immunohistochemical analysis of paraffin-embedded human breast cancer tissue slide using 66123-1-Ig (Kininogen 1 antibody) at dilution of 1:200 (under 40x lens. Heat mediated antigen retrieval with Tris-EDTA buffer (pH 9.0). This data was developed using the same antibody clone with 66123-1-PBS in a different storage buffer formulation.



Immunofluorescent analysis of (-20°C Ethanol) fixed HeLa cells using Kininogen 1 antibody (66123-1-Ig, Clone: 10E8D11 ) at dilution of 1:400 and CoraLite®488-Conjugated AffiniPure Goat Anti-Mouse IgG(H+L). This data was developed using the same antibody clone with 66123-1-PBS in a different storage buffer formulation.