

TFIP11 Monoclonal antibody

Catalog Number: 66114-1-Ig

Basic Information

Catalog Number: 66114-1-Ig	GenBank Accession Number: BC033080	Purification Method: Protein A purification
Concentration: 1000 ug/ml	GeneID (NCBI): 24144	CloneNo.: 1A1C8
Source: Mouse	UNIPROT ID: Q9UBB9	Recommended Dilutions: WB 1:500-1:2000 IHC 1:250-1:1000 IF/ICC 1:200-1:800
Isotype: IgG2b	Full Name: tuftelin interacting protein 11	
Immunogen Catalog Number: AG5821	Calculated MW: 97 kDa Observed MW: 97 kDa	

Applications

Tested Applications:
WB, IHC, IF/ICC, ELISA

Species Specificity:
human

Note-IHC: suggested antigen retrieval with **TE buffer pH 9.0; (*) Alternatively, antigen retrieval may be performed with citrate buffer pH 6.0**

Positive Controls:

WB : HeLa cells, LNCaP cells, human testis tissue, human brain tissue, MCF-7 cells, HepG2 cells, Jurkat cells, K-562 cells, HEK-293 cells

IHC : human breast cancer tissue, human prostate cancer tissue, human liver cancer tissue

IF/ICC : HeLa cells,

Background Information

TFIP11, also named as Tuftelin-interacting protein 11 or Septin and tuftelin-interacting protein 1, is a 837 amino acid protein, which contains one G-patch domain and belongs to the TFP11/STIP family. TFIP11 may localizes in the nucleus and cytoplasm. TFIP11 is involved in pre-mRNA splicing, specifically in spliceosome disassembly during late-stage splicing events. TFIP11 may play a role in the differentiation of ameloblasts and odontoblasts or in the forming of the enamel extracellular matrix.

Storage

Storage:
Store at -20°C. Stable for one year after shipment.
Storage Buffer:
PBS with 0.02% sodium azide and 50% glycerol, pH7.3
Aliquoting is unnecessary for -20°C storage

For technical support and original validation data for this product please contact:

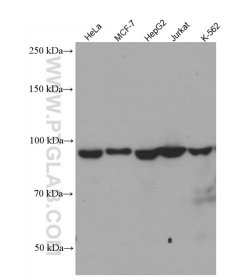
T: 4006900926

E: Proteintech-CN@ptglab.com

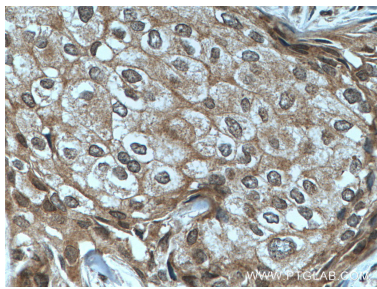
W: ptgcn.com

This product is exclusively available under Proteintech Group brand and is not available to purchase from any other manufacturer.

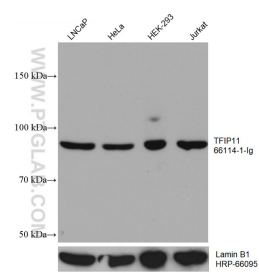
Selected Validation Data



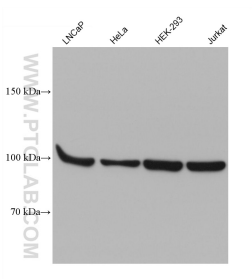
Various lysates were subjected to SDS PAGE followed by western blot with 66114-1-Ig (TFIP11 antibody) at dilution of 1:1000 incubated at room temperature for 1.5 hours.



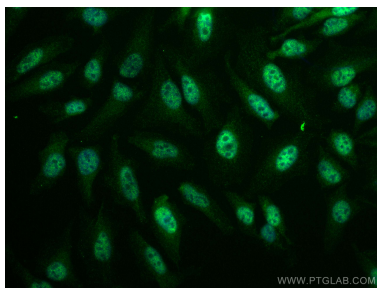
Immunohistochemical analysis of paraffin-embedded human breast cancer tissue slide using 66114-1-Ig (TFIP11 antibody) at dilution of 1:500 (under 40x lens. Heat mediated antigen retrieval with Tris-EDTA buffer (pH 9.0).



Various lysates were subjected to SDS PAGE followed by western blot with 66114-1-Ig (TFIP11 antibody) at dilution of 1:3000 incubated at room temperature for 1.5 hours. The membrane was stripped and reblotted with HRP-conjugated Lamin B1 Monoclonal antibody (HRP-66095) as loading control.



Various lysates were subjected to SDS PAGE followed by western blot with 66114-1-Ig (TFIP11 antibody) at dilution of 1:5000 incubated at room temperature for 1.5 hours.



Immunofluorescent analysis of (4% PFA) fixed HeLa cells using TFIP11 antibody (66114-1-Ig, Clone: 1A1C8) at dilution of 1:400 and Coralite®488-Conjugated AffiniPure Goat Anti-Mouse IgG(H+L).