

For Research Use Only

# AFM Monoclonal antibody, PBS Only

Catalog Number: 66113-1-PBS



## Basic Information

Catalog Number:

66113-1-PBS

Size:

1mg/ml

Source:

Mouse

Isotype:

IgG1

Immunogen Catalog Number:

AG16866

GenBank Accession Number:

BC109020

GeneID (NCBI):

173

UNIPROT ID:

P43652

Full Name:

afamin

Calculated MW:

599 aa, 69 kDa

Observed MW:

85 kDa

Purification Method:

Protein G purification

CloneNo.:

2G9F6

## Applications

Tested Applications:

WB, IHC, IF/ICC, IP, Indirect ELISA

Species Specificity:

human, mouse

## Background Information

AFM (Afinin) is a member of the albumin superfamily, which comprises albumin, vitamin D-binding protein, a-fetoprotein, and afamin. AFM is present in the plasma/serum, cerebrospinal fluid, and follicular fluid, and functions as a vitamin E-binding protein. Alterations of expression level of AFM have been linked to variety of diseases like cancer.

## Storage

Storage:

Store at -80°C.

**The product is shipped with ice packs. Upon receipt, store it immediately at -80°C**

Storage Buffer:

PBS Only

For technical support and original validation data for this product please contact:

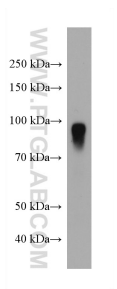
T: 4006900926

E: [Proteintech-CN@ptglab.com](mailto:Proteintech-CN@ptglab.com)

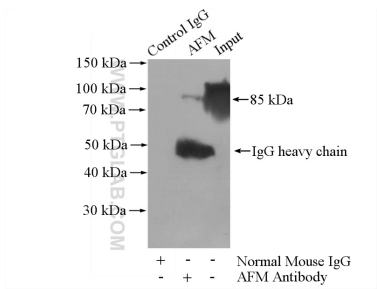
W: [ptgcn.com](http://ptgcn.com)

**This product is exclusively available under Proteintech Group brand and is not available to purchase from any other manufacturer.**

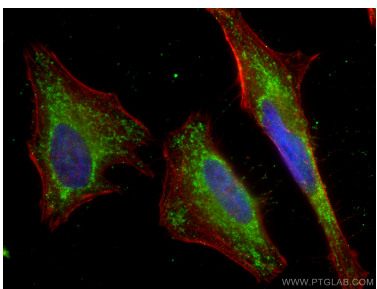
Selected Validation Data



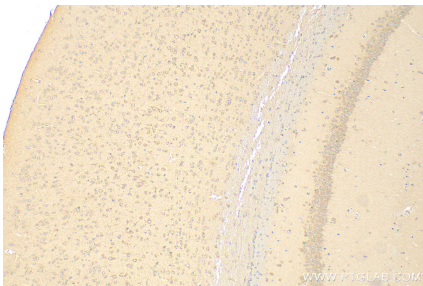
human plasma were subjected to SDS PAGE followed by western blot with 66113-1-Ig (AFM antibody) at dilution of 1:5000 incubated at room temperature for 1.5 hours. This data was developed using the same antibody clone with 66113-1-PBS in a different storage buffer formulation.



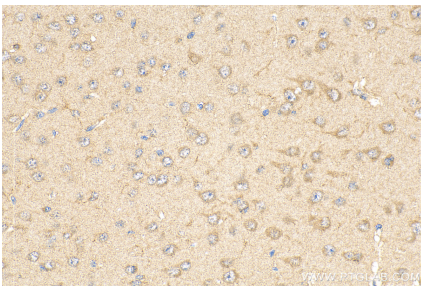
IP result of anti-AFM (IP:66113-1-Ig, 5ug; Detection:66113-1-Ig 1:500) with human plasma lysate 4000ug. This data was developed using the same antibody clone with 66113-1-PBS in a different storage buffer formulation.



Immunofluorescent analysis of (-20°C Ethanol) fixed HeLa cells using AFM antibody (66113-1-Ig, Clone: 2G9F6 ) at dilution of 1:400 and Coralite®488-Conjugated AffiniPure Goat Anti-Mouse IgG(H+L), CL594-Phalloidin (red). This data was developed using the same antibody clone with 66113-1-PBS in a different storage buffer formulation.



Immunohistochemical analysis of paraffin-embedded mouse brain tissue slide using 66113-1-Ig (AFM antibody) at dilution of 1:200 (under 10x lens). Heat mediated antigen retrieval with Tris-EDTA buffer (pH 9.0). This data was developed using the same antibody clone with 66113-1-PBS in a different storage buffer formulation.



Immunohistochemical analysis of paraffin-embedded mouse brain tissue slide using 66113-1-Ig (AFM antibody) at dilution of 1:200 (under 40x lens). Heat mediated antigen retrieval with Tris-EDTA buffer (pH 9.0). This data was developed using the same antibody clone with 66113-1-PBS in a different storage buffer formulation.