

For Research Use Only

# Iduronate 2 sulfatase Monoclonal antibody, PBS Only

Catalog Number: 66112-1-PBS



## Basic Information

Catalog Number:

66112-1-PBS

Size:

1mg/ml

Source:

Mouse

Isotype:

IgG1

Immunogen Catalog Number:

AG19095

GenBank Accession Number:

BC006170

GeneID (NCBI):

3423

UNIPROT ID:

P22304

Full Name:

iduronate 2-sulfatase

Calculated MW:

312aa, 35 kDa; 550aa, 62 kDa

Observed MW:

76 kDa, 55 kDa

Purification Method:

Protein G purification

CloneNo.:

1A3F9

## Applications

Tested Applications:

WB, IHC, IF/ICC, Indirect ELISA

Species Specificity:

human, mouse, rat, pig

## Background Information

Iduronate 2-sulfatase (IDS) is required for the lysosomal degradation of heparan sulfate and dermatan sulfate. Mutations causing IDS deficiency in humans result in the lysosomal storage of these glycosaminoglycans and Hunter syndrome, an X chromosome-linked disease. IDS is synthesized as two precursor forms of 76 and 90 kDa that are converted, through a 62 kDa intermediate, to 55 and 45 kDa mature polypeptides due to an internal proteolytic cleavage (PMID: 10838181).

## Storage

Storage:

Store at -80°C.

**The product is shipped with ice packs. Upon receipt, store it immediately at -80°C**

Storage Buffer:

PBS Only

For technical support and original validation data for this product please contact:

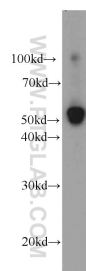
T: 4006900926

E: [Proteintech-CN@ptglab.com](mailto:Proteintech-CN@ptglab.com)

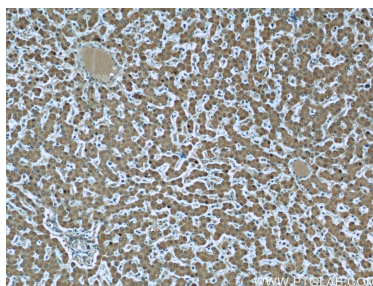
W: [ptgcn.com](http://ptgcn.com)

**This product is exclusively available under Proteintech Group brand and is not available to purchase from any other manufacturer.**

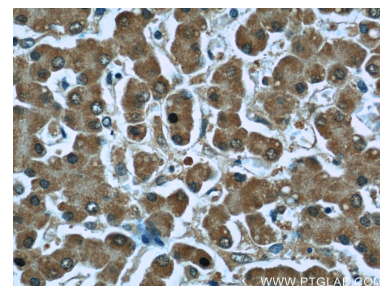
## Selected Validation Data



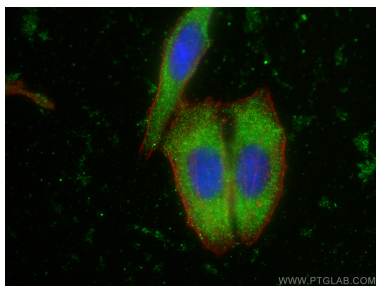
human placenta tissue were subjected to SDS PAGE followed by western blot with 66112-1-Ig (Iduronate 2 sulfatase antibody) at dilution of 1:500 incubated at room temperature for 1.5 hours. This data was developed using the same antibody clone with 66112-1-PBS in a different storage buffer formulation.



Immunohistochemical analysis of paraffin-embedded human liver slide using 66112-1-Ig (Iduronate 2 sulfatase antibody at dilution of 1:50. This data was developed using the same antibody clone with 66112-1-PBS in a different storage buffer formulation.



Immunohistochemical analysis of paraffin-embedded human liver slide using 66112-1-Ig (Iduronate 2 sulfatase antibody at dilution of 1:50. This data was developed using the same antibody clone with 66112-1-PBS in a different storage buffer formulation.



Immunofluorescent analysis of (-20°C Ethanol) fixed HepG2 cells using Iduronate 2 sulfatase antibody (66112-1-Ig, Clone: 1A3F9 ) at dilution of 1:400 and CoraLite®488-Conjugated AffiniPure Goat Anti-Mouse IgG(H+L), CL594-phalloidin (red). This data was developed using the same antibody clone with 66112-1-PBS in a different storage buffer formulation.