

For Research Use Only

SNRPD2 Monoclonal antibody

Catalog Number: 66111-1-Ig



Basic Information

Catalog Number:

66111-1-Ig

Size:

2400 µg/ml

Source:

Mouse

Isotype:

IgG2b

Immunogen Catalog Number:

AG7115

GenBank Accession Number:

BC000486

GeneID (NCBI):

6633

UNIPROT ID:

P62316

Full Name:

small nuclear ribonucleoprotein D2
polypeptide 16.5kDa

Calculated MW:

14 kDa

Observed MW:

14-16 kDa

Purification Method:

Protein A purification

CloneNo.:

1F12B2

Recommended Dilutions:

WB 1:500-1:2000

Applications

Tested Applications:

WB, ELISA

Species Specificity:

human

Positive Controls:

WB : HeLa cells, MCF-7 cells

Background Information

Systemic lupus erythematosus is characterized by antibodies to a variety of intracellular self-antigens, such as dsDNA and Sm, and these serve as hallmarks in the diagnosis of systemic autoimmune diseases. SNRPD2 is one of Sm protein, and is required for pre-mRNA splicing, snRNP biogenesis.

Storage

Storage:

Store at -20°C. Stable for one year after shipment.

Storage Buffer:

PBS with 0.02% sodium azide and 50% glycerol pH 7.3.

Aliquoting is unnecessary for -20°C storage

For technical support and original validation data for this product please contact:

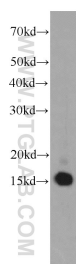
T: 4006900926

E: Proteintech-CN@ptglab.com

W: ptgcn.com

This product is exclusively available under Proteintech Group brand and is not available to purchase from any other manufacturer.

Selected Validation Data



HeLa cells were subjected to SDS PAGE followed by western blot with 66111-1-Ig (SNRPD2 antibody) at dilution of 1:1000 incubated at room temperature for 1.5 hours.