

Clusterin Monoclonal antibody

Catalog Number: 66109-1-Ig

Basic Information

Catalog Number:

66109-1-Ig

Size:

2200 ug/ml

Source:

Mouse

Isotype:

IgG1

Immunogen Catalog Number:

AG19236

GenBank Accession Number:

BC010514

GeneID (NCBI):

1191

UNIPROT ID:

P10909

Full Name:

clusterin

Calculated MW:

449 aa, 53 kDa

Observed MW:

36 kDa

Purification Method:

Protein G purification

CloneNo.:

2F12G10

Recommended Dilutions:

WB 1:5000-1:50000

IHC 1:20-1:200

Applications

Tested Applications:

WB, IHC, ELISA

Species Specificity:

human

Note-IHC: suggested antigen retrieval with TE buffer pH 9.0; (*) Alternatively, antigen retrieval may be performed with citrate buffer pH 6.0

Positive Controls:

WB : human plasma,

IHC : human liver tissue, human breast cancer tissue, human prostate cancer tissue

Background Information

Clusterin (Apolipoprotein J) is a 75-80 kDa heterodimeric glycoprotein produced by a wide array of tissues and found in most biologic fluids (PMID: 7648419; 11906815). It is encoded by one single gene and cleaved posttranslationally into α (34-36 kDa) and β (36-39 kDa) subunits prior to secretion from the cell. Many functions have been described for clusterin, including regulating apoptosis, transporting lipids, controlling cell interactions, regulating complement (PMID: 10694874).

Storage

Storage:

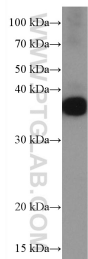
Store at -20°C. Stable for one year after shipment.

Storage Buffer:

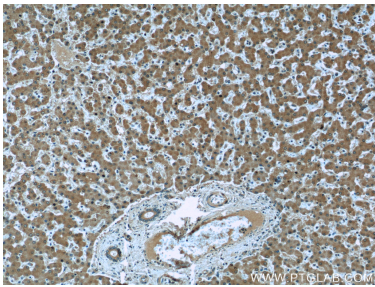
PBS with 0.02% sodium azide and 50% glycerol pH 7.3.

Aliquoting is unnecessary for -20°C storage

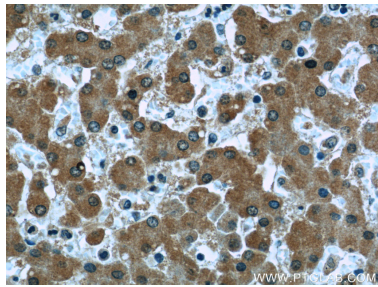
Selected Validation Data



human plasma were subjected to SDS PAGE followed by western blot with 66109-1-Ig (Clusterin antibody) at dilution of 1:20000 incubated at room temperature for 1.5 hours.



Immunohistochemical analysis of paraffin-embedded human liver slide using 66109-1-Ig (Clusterin antibody at dilution of 1:50 (under 10x lens).



Immunohistochemical analysis of paraffin-embedded human liver slide using 66109-1-Ig (Clusterin antibody at dilution of 1:50 (under 40x lens).