

# Prealbumin/transthyretin Monoclonal antibody, PBS Only

Catalog Number: 66108-1-PBS

## Basic Information

## Catalog Number:

66108-1-PBS

## Size:

1mg/ml

## Source:

Mouse

## Isotype:

IgG2a

## Immunogen Catalog Number:

AG19232

## GenBank Accession Number:

BC020791

## GeneID (NCBI):

7276

## UNIPROT ID:

P02766

## Full Name:

transthyretin

## Calculated MW:

147 aa, 16 kDa

## Observed MW:

14-16 kDa, 28-33 kDa

## Purification Method:

Protein A purification

## CloneNo.:

1H8C4

## Applications

## Tested Applications:

Indirect ELISA, IHC, WB

## Species Specificity:

mouse, human

## Background Information

Transthyretin (TTR) is a plasma transport protein for thyroxine and retinol, through the association with retinol-binding protein. It is a homotetrameric protein synthesized mainly in liver, choroid plexus, retinal pigment epithelium, and pancreas. Within the CNS, TTR is the only known protein synthesized solely by the choroid plexus. Mutant and wildtype TTR give rise to various forms of amyloid deposition (amyloidosis). Defects in TTR are the cause of amyloidosis transthyretin-related (AMYL-TTR), hyperthyroxinemia dysransthyretinemic euthyroidal (HTDE) and carpal tunnel syndrome type 1 (CTS1). In addition, positive immunostaining for TTR has been reported as a sensitive diagnostic marker of choroid plexus tumors. TTR can be expressed as monomer (14-16 kDa), dimer (28-33 kDa), or tetramer around 55-60 kDa. (PMID: 22103483)

## Storage

## Storage:

Store at -80°C.

**The product is shipped with ice packs. Upon receipt, store it immediately at -80°C**

## Storage Buffer:

PBS Only

For technical support and original validation data for this product please contact:

T: 4006900926

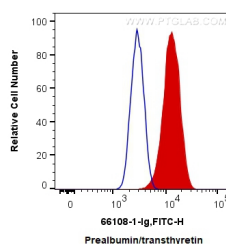
E: [Proteintech-CN@ptglab.com](mailto:Proteintech-CN@ptglab.com)W: [ptgcn.com](http://ptgcn.com)

**This product is exclusively available under Proteintech Group brand and is not available to purchase from any other manufacturer.**

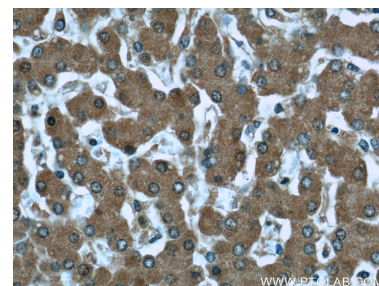
## Selected Validation Data



human brain tissue were subjected to SDS PAGE followed by western blot with 66108-1-Ig (Prealbumin/transferrin antibody) at dilution of 1:1000 incubated at room temperature for 1.5 hours. This data was developed using the same antibody clone with 66108-1-PBS in a different storage buffer formulation.



1X10<sup>6</sup> PC-12 cells were intracellularly stained with 0.4 ug Anti-Human Prealbumin/transferrin (66108-1-Ig, Clone:1H8C4) and CoraLite®488-Conjugated AffiniPure Goat Anti-Mouse IgG(H+L) at dilution 1:1000 (red), or 0.4 ug Control Antibody. Cells were fixed with 4% PFA and permeabilized with Flow Cytometry Perm Buffer (PF00011-C). This data was developed using the same antibody clone with 66108-1-PBS in a different storage buffer formulation.



Immunohistochemical analysis of paraffin-embedded human liver tissue slide using 66108-1-Ig (Prealbumin/transferrin antibody at dilution of 1:50. This data was developed using the same antibody clone with 66108-1-PBS in a different storage buffer formulation.