

Catalog Number: 66105-1-PBS

Basic Information

Catalog Number:

66105-1-PBS

Size:

1mg/ml

Source:

Mouse

Isotype:

IgG2b

Immunogen Catalog Number:

AG7294

GenBank Accession Number:

BC001756

GeneID (NCBI):

5236

UNIPROT ID:

P36871

Full Name:

phosphoglucomutase 1

Calculated MW:

61 kDa

Observed MW:

61 kDa

Purification Method:

Protein A purification

CloneNo.:

2G5A8

Applications

Tested Applications:

WB, IF, IHC, Indirect ELISA

Species Specificity:

human, mouse, rat, rabbit, pig

Background Information

PGM1(Phosphoglucomutase-1) is also named as glucose phosphomutase 1 and belongs to the phosphohexose mutase family. It catalyzes the transfer of phosphate between the 1 and 6 positions of glucose. In most cell types, PGM1 isozymes predominate, representing about 90% of total PGM activity. One exception is red cells, where PGM2 is a major isozyme(PMID:8257433). Defects in PGM1 are the cause of glycogen storage disease type 14 (GSD14) (PMID:19625727). It has 2 isoforms produced by alternative splicing.

Storage

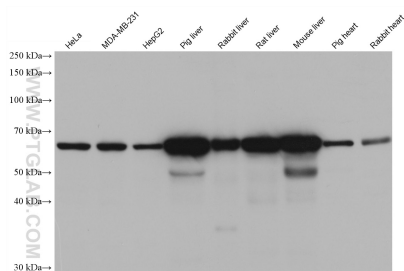
Storage:

Store at -80°C.

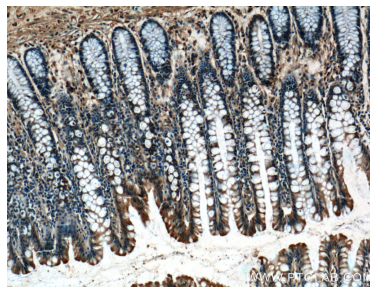
The product is shipped with ice packs. Upon receipt, store it immediately at -80°C**Storage Buffer:**

PBS Only

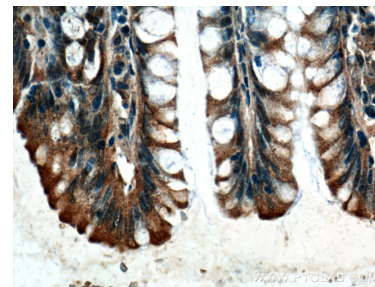
Selected Validation Data



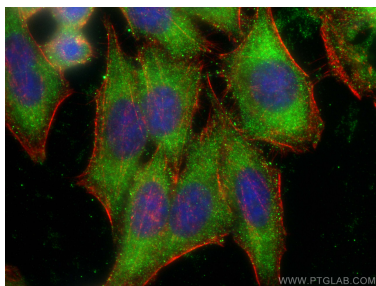
Various lysates were subjected to SDS PAGE followed by western blot with 66105-1-Ig (PGM1 antibody) at dilution of 1:5000 incubated at room temperature for 1.5 hours. This data was developed using the same antibody clone with 66105-1-PBS in a different storage buffer formulation.



Immunohistochemical analysis of paraffin-embedded human colon tissue slide using 66105-1-Ig (PGM1 Antibody) at dilution of 1:200 (under 10x lens). This data was developed using the same antibody clone with 66105-1-PBS in a different storage buffer formulation.



Immunohistochemical analysis of paraffin-embedded human colon tissue slide using 66105-1-Ig (PGM1 Antibody) at dilution of 1:200 (under 40x lens). This data was developed using the same antibody clone with 66105-1-PBS in a different storage buffer formulation.



Immunofluorescent analysis of (-20°C Ethanol) fixed HepG2 cells using PGM1 antibody (66105-1-Ig, Clone: 2G5A8) at dilution of 1:1000 and CoraLite®488-Conjugated AffiniPure Goat Anti-Mouse IgG(H+L), CL594-phalloidin (red). This data was developed using the same antibody clone with 66105-1-PBS in a different storage buffer formulation.