

For Research Use Only

# RBP4 Monoclonal antibody, PBS Only



Catalog Number: 66104-1-PBS

## Basic Information

<b>Catalog Number:</b> 66104-1-PBS	<b>GenBank Accession Number:</b> BC020633	<b>Purification Method:</b> Protein A purification
<b>Size:</b> 1mg/ml	<b>GeneID (NCBI):</b> 5950	<b>CloneNo.:</b> 1D12B11
<b>Source:</b> Mouse	<b>UNIPROT ID:</b> P02753	
<b>Isotype:</b> IgG2a	<b>Full Name:</b> retinol binding protein 4, plasma	
<b>Immunogen Catalog Number:</b> AG19295	<b>Calculated MW:</b> 201 aa, 23 kDa	
	<b>Observed MW:</b> 23 kDa	

## Applications

**Tested Applications:**  
WB, IHC, IF/ICC, IF-P, ELISA

**Species Specificity:**  
human

## Background Information

RBP4 (retinol-binding protein 4) is a carrier protein that transports vitamin A (retinol) from the liver to the peripheral tissues. Synthesized primarily by hepatocytes and adipocytes as a 21 kDa non-glycosylated protein, RBP4 is secreted into the circulation as a retinol-RBP4 complex. In plasma the RBP4-retinol complex is bound to transthyretin (TRR), which prevents prevent kidney filtration. Two truncated forms of RBP4, RBP4-L (truncated at Leu-183) and RBP4-LL (truncated at Leu-182 and Leu-183), exist by proteolytic process. RBP4-L and RBP4-LL, which do not bind TTR, are normally excreted into the urine but accumulate in the serum during renal failure. Urinary RBP4 has been reported as marker for glomerular disease. RBP4 also was identified as an adipokine that elevated in some INS-resistant states. Measurement of serum RBP4 could be used to assess the risk of INS resistance, type 2 diabetes, obesity, and cardiovascular disease. (18752671, 16034410)

## Storage

**Storage:**  
Store at -80°C.  
**The product is shipped with ice packs. Upon receipt, store it immediately at -80°C**

**Storage Buffer:**  
PBS Only

For technical support and original validation data for this product please contact:

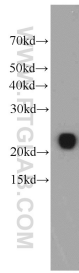
T: 4006900926

E: [Proteintech-CN@ptglab.com](mailto:Proteintech-CN@ptglab.com)

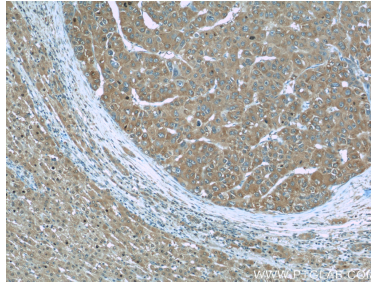
W: [ptgcn.com](http://ptgcn.com)

**This product is exclusively available under Proteintech Group brand and is not available to purchase from any other manufacturer.**

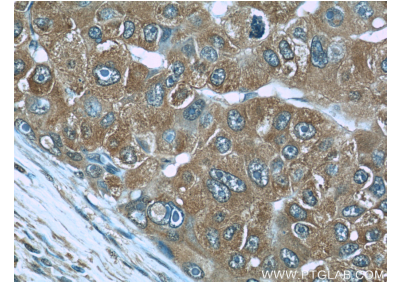
## Selected Validation Data



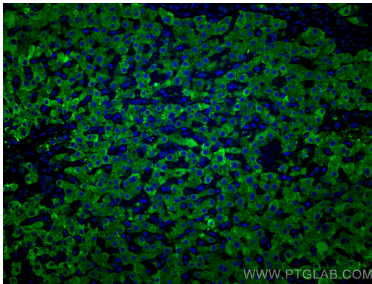
human blood were subjected to SDS PAGE followed by western blot with 66104-1-Ig (RBP4 antibody) at dilution of 1:4000 incubated at room temperature for 1.5 hours. This data was developed using the same antibody clone with 66104-1-PBS in a different storage buffer formulation.



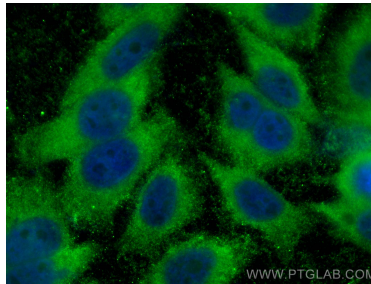
Immunohistochemical analysis of paraffin-embedded human liver cancer slide using 66104-1-Ig (RBP4 Antibody) at dilution of 1:50. This data was developed using the same antibody clone with 66104-1-PBS in a different storage buffer formulation.



Immunohistochemical analysis of paraffin-embedded human liver cancer slide using 66104-1-Ig (RBP4 Antibody) at dilution of 1:50. This data was developed using the same antibody clone with 66104-1-PBS in a different storage buffer formulation.



Immunofluorescent analysis of (4% PFA) fixed human liver cancer tissue using RBP4 antibody (66104-1-Ig, Clone: 1D12B11) at dilution of 1:400 and CoraLite®488-Conjugated AffiniPure Goat Anti-Mouse IgG(H+L). This data was developed using the same antibody clone with 66104-1-PBS in a different storage buffer formulation.



Immunofluorescent analysis of (-20°C Ethanol) fixed HepG2 cells using RBP4 antibody (66104-1-Ig, Clone: 1D12B11) at dilution of 1:3000 and CoraLite®488-Conjugated AffiniPure Goat Anti-Mouse IgG(H+L). This data was developed using the same antibody clone with 66104-1-PBS in a different storage buffer formulation.